



# L'OLIVERA 9



PGA CATALUNYA  
RESORT



# L'OLIVERA 9

## AN ULTRA-CONTEMPORARY VILLA DESIGNED FOR LUXURY LIVING

---

Situated on a quiet edge of PGA Catalunya Resort, L'Olivera 9 offers sensational views over Hole 12 of the Tour Course, the lake and surrounding countryside. Designed by Barcelona-based architect Jaime Prous, the elegantly angular villa maximises volume and light.

The south-west-facing property is spread over two floors, with two double bedrooms on the ground floor and two with ensuite bathrooms on the first floor - complete with private terrace.

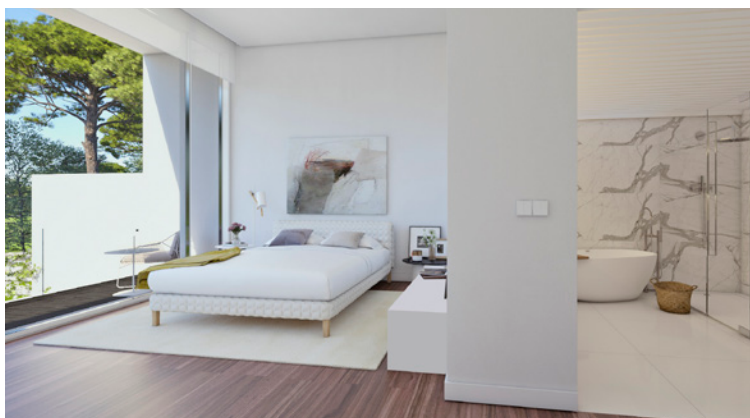
The light-filled living spaces are open plan and feature a state-of-the-art kitchen, as well as a spacious living and dining area. The property also features a sculptural staircase in walnut wood connecting the living space to the first floor. To contrast with the large amount of natural light, walnut has been used extensively in the interior design to convey a sense of modernity and warmth. Floor to ceiling windows help bring the outdoors in, and open onto a carefully designed exterior creating a rich spatial sequence, including a large terrace with pergola, a barbecue area, and a beautifully landscaped garden with infinity pool.











## BASIC DETAILS

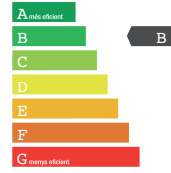
ARCHITECT	Jaime Prous
PLOT	817 m <sup>2</sup>
INTERIOR BUILT AREA	378 m <sup>2</sup>
EXTERIOR BUILT AREA	172 m <sup>2</sup>
BEDROOMS	4
BATHROOMS	3
POOL	43 m <sup>2</sup>

## EQUIPMENT

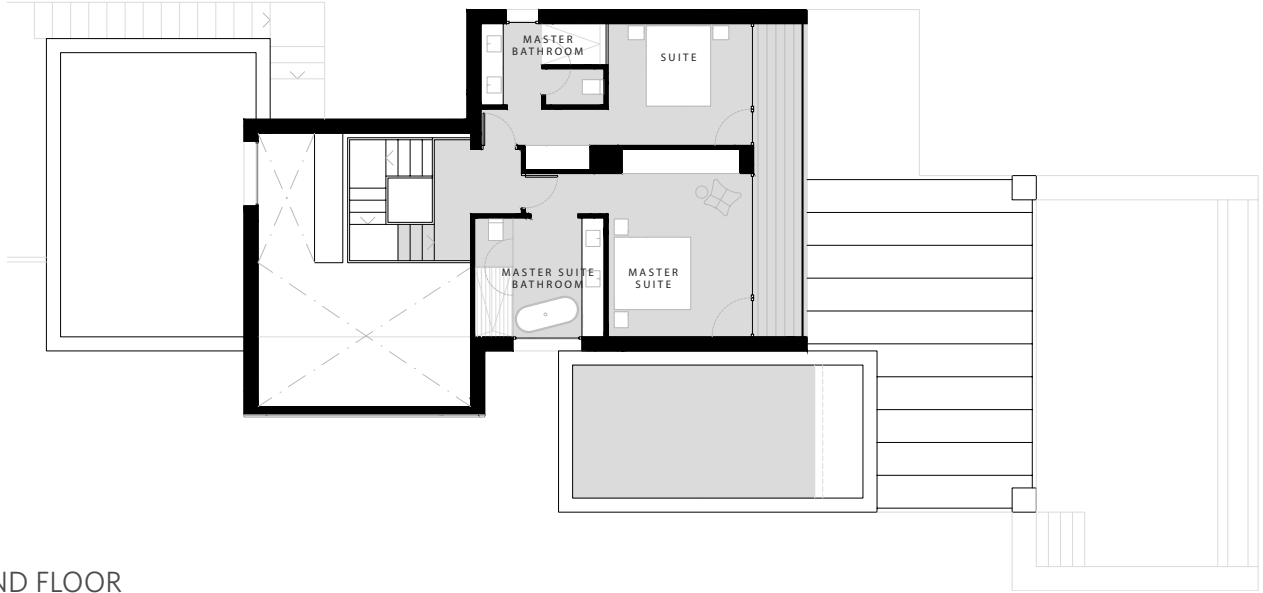
KITCHEN	Bulthaup, Neff
BATHROOMS	Roca
AIR CONDITIONING	Daikin or equivalent
HEATING	Radiant floor
DOMOTICS	KNX-Control 4
COMMUNICATIONS	Optical Fibre, Wi-Fi Amplifier
ENERGY QUALIFICATION	Rating B

Estimated built areas, counting the 100% of the surface area of the property, 50% of the covered patios. Approximate terrace surface counting is 100%. This is a document provided for information purposes only, the Developer reserves the right to modify the figures and features & specifications because of technical or legal circumstances. The developer reserves the right to change the finishes for others of equal or higher quality than those specified. Computer generated image for illustrative purposes only. Consumption and emission values are for guidance only and correspond to a standard home with a specific location, orientation and finishing materials. The measurements referred to in this brochure are those of the properties in Block B, they are an approximate guideline for the rest of the Blocks.

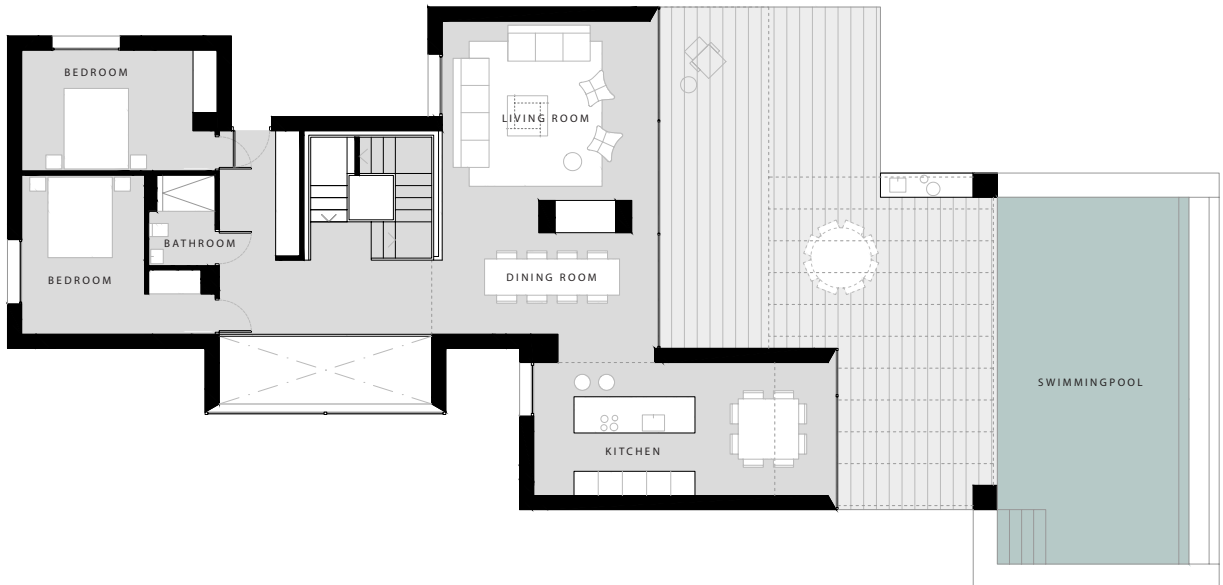
Interior built area	378 m <sup>2</sup>
Exterior built area	172 m <sup>2</sup>



FIRST FLOOR



GROUND FLOOR



BASEMENT





# YOUR NEW HOME AT PGA CATALUNYA RESORT



## CONTACT

PGA Catalunya Resort  
Carretera N-II km701, 17455 Caldes de Malavella,  
Girona, Spain

Tel: +34 972 472 957  
realestate@pgacatalunya.com  
www.pgacatalunya.com