



L'OLIVERA 8



PGA CATALUNYA
RESORT

L'OLIVERA 8

CONTEMPORARY DESIGNER VILLA WITH SUPERB VIEWS OVER THE NATURAL SURROUNDINGS

Situated in a south west-facing area of the prestigious PGA Catalunya Resort, L'Olivera 8 offers sensational lakeside views over the 12th hole of the Tour Course and the surrounding countryside. Built by Barcelona-based architect Gerard Oliver, the ultra-modern concept is designed to offer luxury living - and maximise sunshine and light.

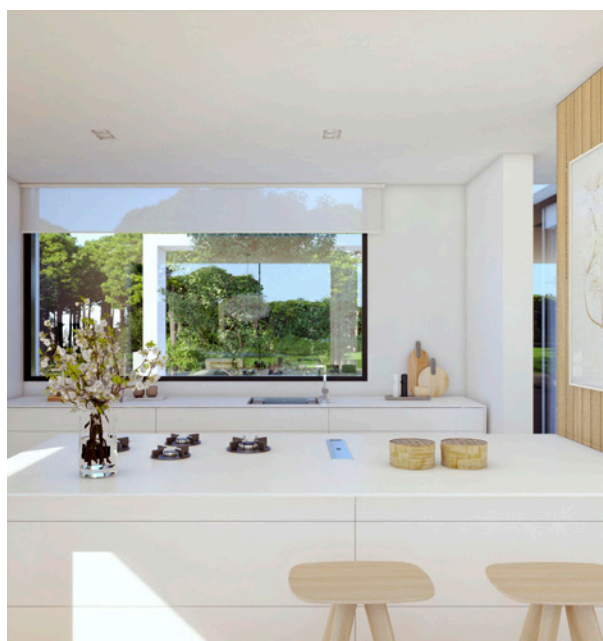
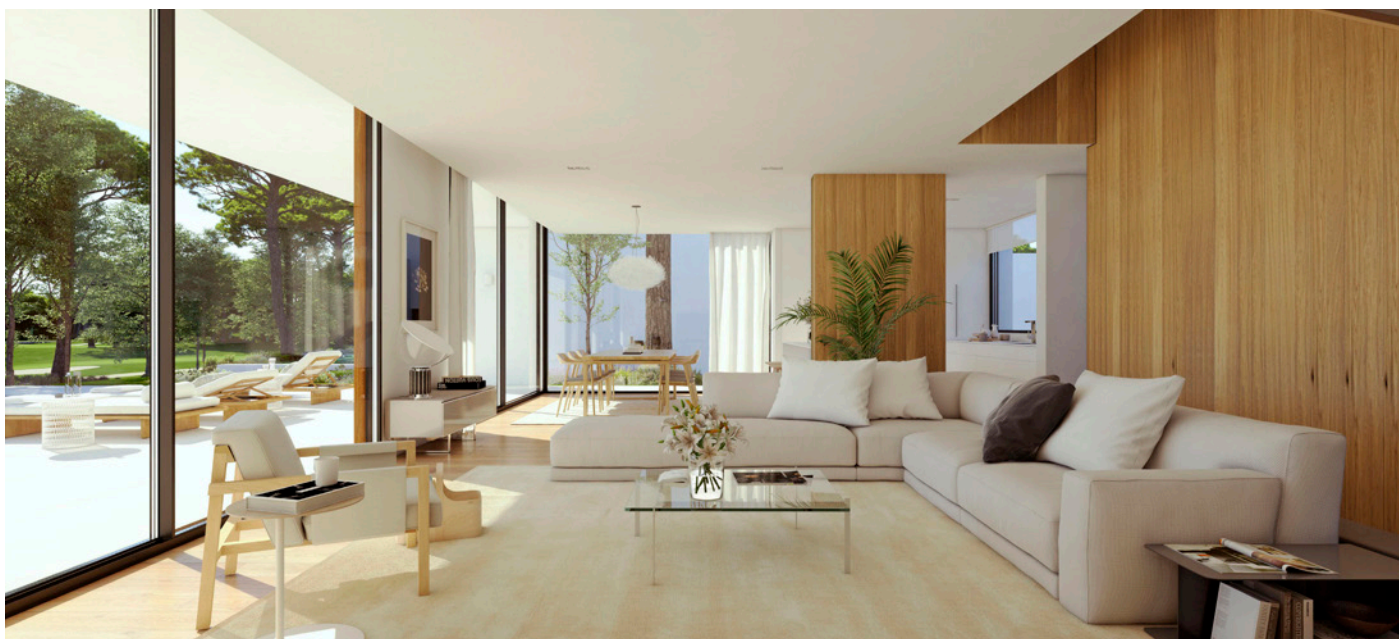
The L-shaped 3-bedroom property is spread over three floors and includes a generous multifunctional area in the basement - opening onto a large, light-filled central patio - to develop according to individual lifestyle needs. The two bedrooms on the ground floor, each with an ensuite bathroom, have direct access onto the central patio leading into the garden. The first floor is dedicated to the spacious master suite, complete with walk-in wardrobe and private terrace with breathtaking views across the resort.

The main living spaces are open plan and feature a state-of-the-art kitchen, as well as a spacious living and dining area. Floor-to-ceiling windows help to bring the outdoors in - maximising the more than 400m² of landscaped gardens filled with Mediterranean plants. A sleek private pool completes a large terrace with outdoor dining and barbecue areas, and sundeck.

The minimalist design and clean lines provide the property with an elegant, horizontal-based geometry. Contrasting textures include natural wood, smooth white walls and floor-to-ceiling glass, enhancing the ultra-contemporary feel. Complete with the latest in designer fittings and smart home technology, the villa also includes a private parking area with two parking spaces.







BASIC DETAILS

ARCHITECT	Gerard Oliver
PLOT	817,80 m ²
BUILT AREA	357,95 m ²
PORCHES AND TERRACES	259,19 m ²
BEDROOMS	3
BATHROOMS	4
GUEST TOILET	1
POOL	42,24 m ²
PARKING	20,36 m ²
MULTIFUNCTIONAL ROOM	60,32 m ²

EQUIPMENT

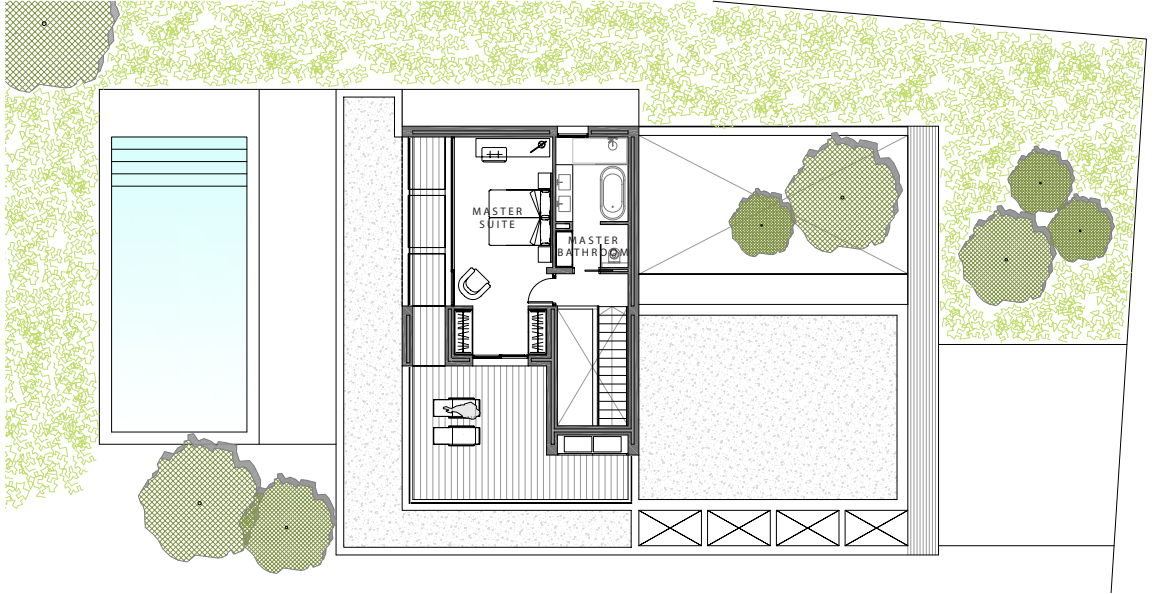
KITCHEN	Bulthaup, Neff or equivalent
BATHROOMS	DURAVIT, Roca or equivalent
AIR CONDITIONING	LG, Daikin or equivalent
HEATING	Radiant floor
DOMOTICS	KNX-Control 4
COMMUNICATIONS	Optical Fibre, Wi-Fi Amplifier
ENERGY QUALIFICATION	Rating B

This is a document provided for information purposes only, the Developer reserves the right to modify the figures and features & specifications because of technical or legal circumstances. The developer reserves the right to change the finishes for others of equal or higher quality than those specified. Computer generated image for illustrative purposes only. Consumption and emission values are for guidance only and correspond to a standard home with a specific location, orientation and finishing materials.

Built area	357,95 m ²
Porches and terraces	259,19 m ²



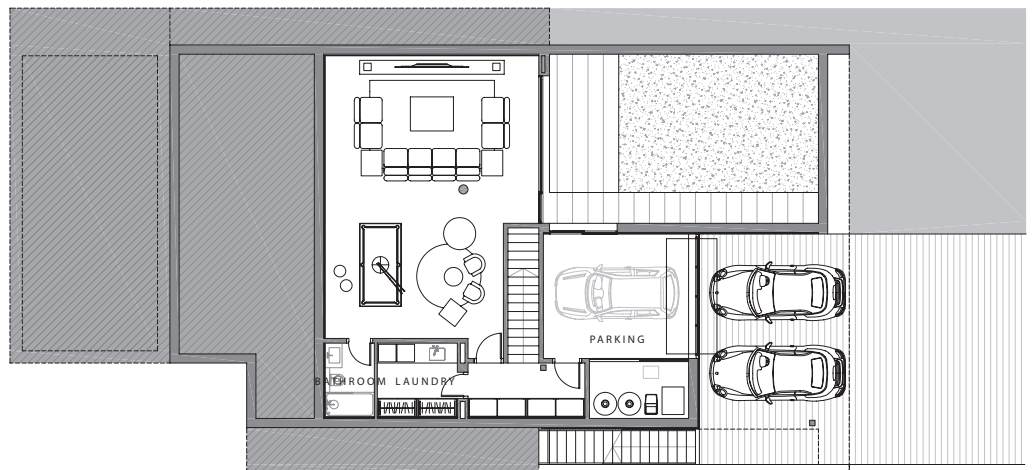
FIRST FLOOR



GROUND FLOOR



BASEMENT



YOUR NEW HOME AT PGA CATALUNYA RESORT



CONTACT

PGA Catalunya Resort
Carretera N-II km701, 17455 Caldes de Malavella,
Girona, Spain

Tel: +34 972 472 957
realestate@pgacatalunya.com
www.pgacatalunya.com