



# L'OLIVERA 7



PGA CATALUNYA  
RESORT



# L'OLIVERA 7

## SLEEK L-SHAPED VILLA WITH PRIME VIEWS OVER THE GOLF COURSE

---

Situated on a idyllic edge of PGA Catalunya Resort, L'Olivera 7 offers sensational views over Hole 12 on the Tour Course and the surrounding countryside. Built by Jordi Llinares, the L-shaped concept - Lavand Premium - is designed to maximise sunshine and light.

The property is spread over two floors and a basement which includes a multifunctional area to develop according to individual lifestyle needs. The three bedrooms on the ground floor have direct access onto a veranda leading directly into the garden. The master bedroom on the first floor has its own private terrace with breathtaking views across the resort. The main living spaces are open plan and feature a state of the art kitchen, as well as a spacious living room and dining room.

Floor to ceiling windows help to bring the outdoors in -maximising the landscaped gardens filled with Mediterranean plants that cultivate a sense of privacy. An infinity pool completes a large terrace with outdoor dining and barbecue areas.











## BASIC DETAILS

ARCHITECT	Jordi Llinares
PRICE	€1.550.000
PLOT	817 m <sup>2</sup>
INTERIOR BUILT AREA	404 m <sup>2</sup>
COVERED TERRACE	29,38 m <sup>2</sup>
BEDROOMS	4
BATHROOMS	3
POOL	30 m <sup>2</sup>

## EQUIPMENT

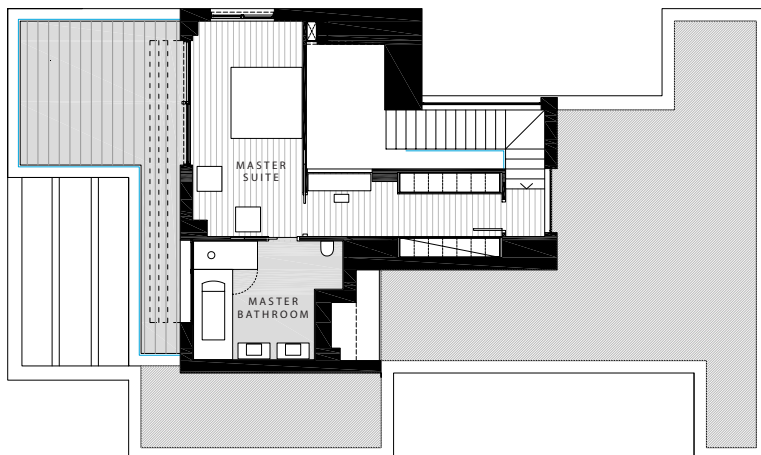
KITCHEN	Bulthaup, Neff
BATHROOMS	Roca
AIR CONDITIONING	Mitsubishi
HEATING	Radiant floor
DOMOTICS	Electron, Junk, Comfort click
COMMUNICATIONS	Optical Fibre, Wi-Fi Amplifier
ENERGY QUALIFICATION	Rating B

Estimated built areas, counting the 100% of the surface area of the property, 50% of the covered patios. Approximate terrace surface counting is 100%. This is a document provided for information purposes only, the Developer reserves the right to modify the figures and features & specifications because of technical or legal circumstances. The developer reserves the right to change the finishes for others of equal or higher quality than those specified. Computer generated image for illustrative purposes only. Consumption and emission values are for guidance only and correspond to a standard home with a specific location, orientation and finishing materials. The measurements referred to in this brochure are those of the properties in Block B, they are an approximate guideline for the rest of the Blocks.

Interior built area	404 m <sup>2</sup>
Covered terrace	29,38 m <sup>2</sup>



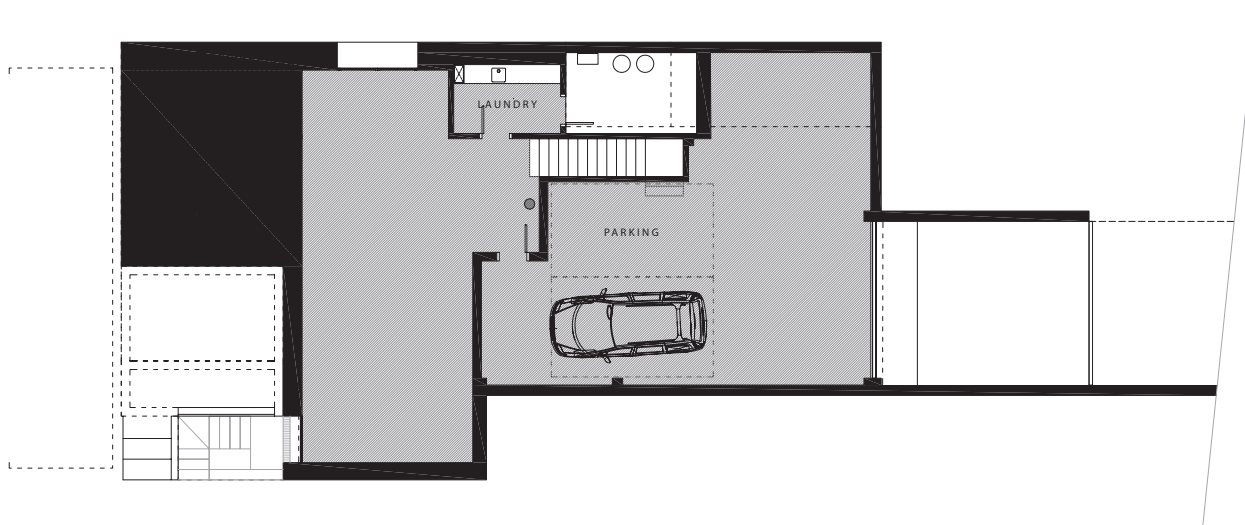
## FIRST FLOOR



## GROUND FLOOR



## BASEMENT





## YOUR NEW HOME AT PGA CATALUNYA RESORT



### CONTACT

PGA Catalunya Resort  
Carretera N-II km701, 17455 Caldes de Malavella,  
Girona, Spain

Tel: +34 972 472 957  
[realestate@pgacatalunya.com](mailto:realestate@pgacatalunya.com)  
[www.pgacatalunya.com](http://www.pgacatalunya.com)