



L'OLIVERA 5



PGA CATALUNYA
RESORT

L'OLIVERA 5

A COMBINATION OF SLEEK, MODERN DESIGN
AND STUNNING VIEWS

Situated on an idyllic edge of PGA Catalunya resort, L'Olivera 5 offers sensational views over Hole 12 on the Tour Course, the lake and surrounding countryside. The property was designed by Gerard Oliver to maximise light and sunshine, the stunning views and careful integration into the surroundings.

L'Olivera 5 is spread over two floors and a basement which includes a multi-functional area with natural light to develop according to individual lifestyle needs, and a garage for two cars. There are three bedrooms on the ground floor plus the master bedroom on the first floor, with its own private terrace offering breathtaking views across the resort.

The open plan living spaces lead onto a generous terrace with infinity pool and beautifully landscaped garden. The property combines modernity and warmth thanks to the extensive use of wood in its design.







BASIC DETAILS

ARCHITECT	Gerard Oliver Bofill
PLOT	817 m ²
INTERIOR BUILT AREA	444,93 m ²
EXTERIOR BUILT AREA	163,55 m ²
BEDROOMS	4
BATHROOMS	3
GUEST TOILET	1
POOL	25 m ²

EQUIPMENT

KITCHEN	Bulthaup, Neff
BATHROOMS	Duravit, Hansgrohe
AIR CONDITIONING	Mitsubishi
HEATING	Radiant floor
DOMOTICS	KNX-Control 4
COMMUNICATIONS	Optical Fibre, Wi-Fi Amplifier
ENERGY QUALIFICATION	Rating B

Estimated built areas, counting the 100% of the surface area of the property, 50% of the covered patios. Approximate terrace surface counting is 100%. This is a document provided for information purposes only, the Developer reserves the right to modify the figures and features & specifications because of technical or legal circumstances. The developer reserves the right to change the finishes for others of equal or higher quality than those specified. Computer generated image for illustrative purposes only. Consumption and emission values are for guidance only and correspond to a standard home with a specific location, orientation and finishing materials. The measurements referred to in this brochure are those of the properties in Block B, they are an approximate guideline for the rest of the Blocks.

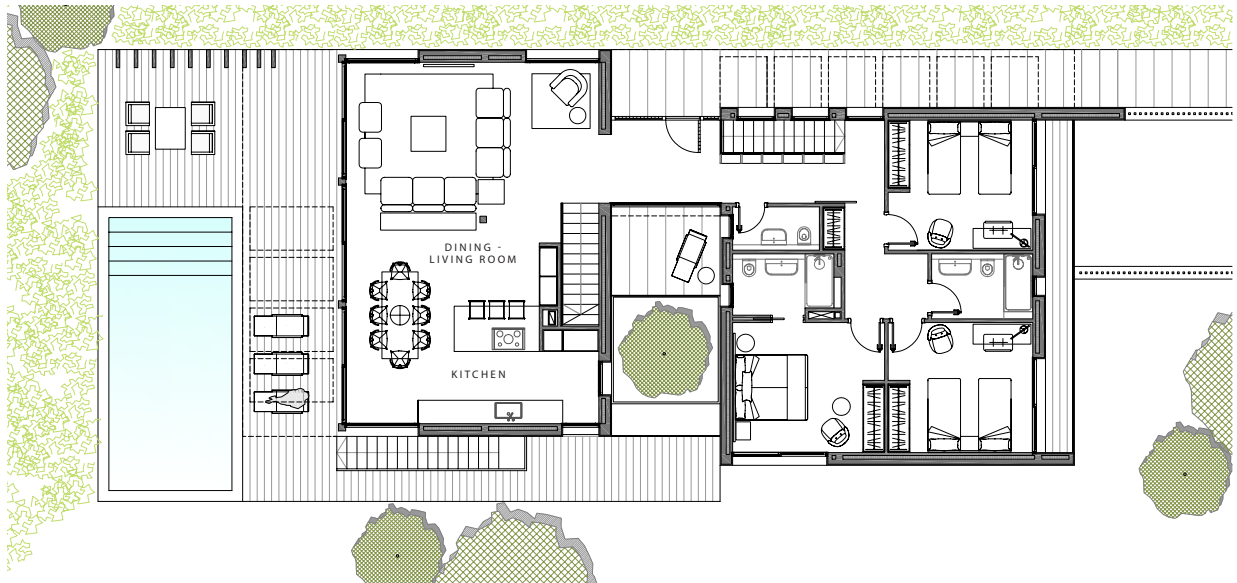
Interior built area	444,93 m ²
Exterior built area	163,55 m ²



FIRST FLOOR



GROUND FLOOR



BASEMENT



YOUR NEW HOME AT PGA CATALUNYA RESORT



CONTACT

PGA Catalunya Resort
Carretera N-II km701, 17455 Caldes de Malavella,
Girona, Spain

Tel: +34 972 472 957
realestate@pgacatalunya.com
www.pgacatalunya.com