

LA VINYA

20



PGA CATALUNYA
GOLF AND WELLNESS

Set in a 500 hectare Catalan countryside, the unique properties at PGA Catalunya are designed to let the beauty of their woodland surroundings to pour inside.

Blending nature into the architecture of our sustainable properties, the design focuses on mental and physical wellbeing throughout. Not only will residents benefit from award-winning design and architecture, they will also step outside into our uninhibited Catalan landscape and enjoy its endless mountain views.

Residents will certainly appreciate the abundance of experiences crafted to rejuvenate the mind and the body: from a round on PGA Catalunya's European Tour golf courses, the Stadium and the Tour Course, to walking through our kitchen garden to pick their own organic produce for the table.

Being among the Catalan pine trees is a truly holistic way to experience life. No aspect of our exceptional properties is left unturned, with carefully considered nutrition, comfort and exercise set to enhance everyday living.

Our IAGTO sustainability award-winning resort offers a glimpse of the future of environmentally conscious living cultivating PGA Catalunya's philosophy to celebrate the finer things in life: eating well, being well and living well.

pgacatalunya.com



PGA CATALUNYA
GOLF AND WELLNESS

Clarity, elegance and spectacular views characterise this mediterranean property

This unique, luxury home is situated in La Vinya, the most exclusive area of the resort. Designed by OAB, the studio of leading Barcelona architect Carlos Ferrater, the 4-bedroom property is set on a generous 2,000m² plot adjacent to vineyards and surrounded by trees.

The spacious, open-plan living area features floor-to-ceiling windows offering a seamless connection with the expansive, south-facing terrace - perfect for entertaining - and private, infinity pool.

One of the original features of this one-off property is its layout. Three of the beautifully appointed bedrooms and en-suite bathrooms are situated on the ground floor, with direct access to the terrace and garden. A second terrace at the rear of the property comes complete with a jacuzzi, for full privacy even in winter.

The first floor space is entirely dedicated to the master bedroom and en-suite bathroom for optimum calm and privacy. Accessed by a stylish staircase in steel, glass and iroko wood, the master bedroom has two private terraces with breath-taking views of the golf course, the resort and its surroundings.

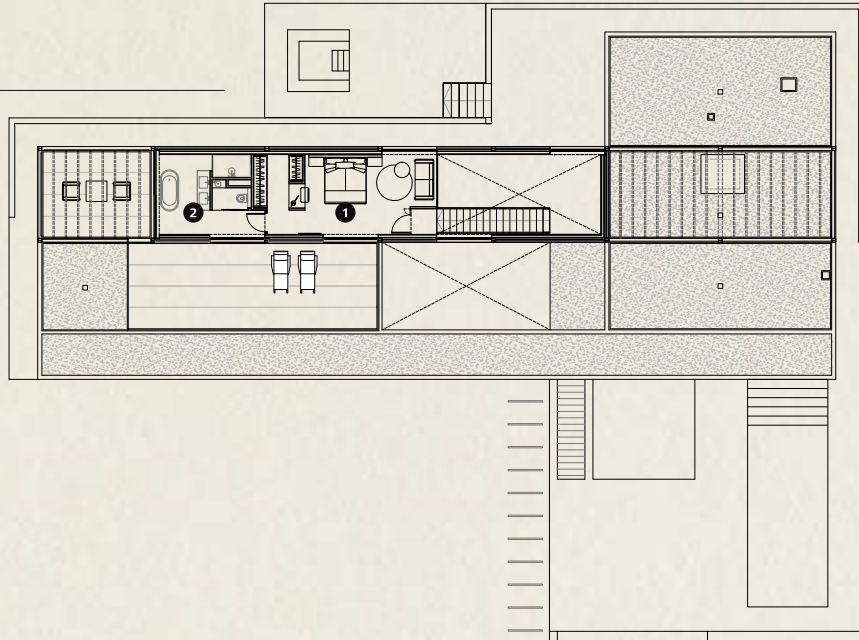
A luxurious family property. Like no other.





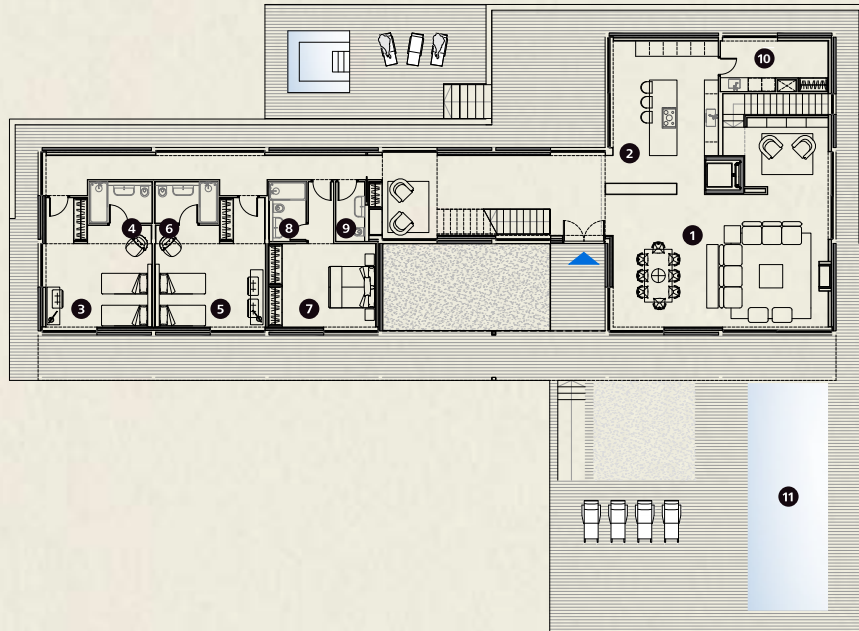
First Floor

- 1 Master Bedroom
- 2 Master Bathroom



Ground Floor

- 1 Dining Living Room
- 2 Kitchen
- 3 Bedroom
- 4 Bathroom
- 5 Bedroom
- 6 Bathroom
- 7 Bedroom
- 8 Bathroom
- 9 Guest Toilet
- 10 Laundry
- 11 Swimming



Basement

- 1 Multifunctional Room



Specifications

Architect	Carlos Ferrater (OAB)
Plot	2003 m ²
Built area	1165,2 m ²
Porches and Terraces	356,1 m ²
Bedrooms	4
Bathrooms	4
Guest toilet	1
Parking	76,89 m ²
Swimming Pool	35 m ²
Multifunctional Room	40 m ²
Kitchen	Bulthaup Neff
Bathrooms	Duravit Hansgrohe
Air Conditioning	LG Multi V5
Heating	Heating floor
Domotics	Control 4
Communications	Optical Fibre, Wi-Fi Access Points
Energy Qualification	Rating A



This is a document provided for information purposes only, the Developer reserves the right to modify the figures and features & specifications because of technical or legal circumstances. The developer reserves the right to change the finishes for others of equal or higher quality than those specified. Computer generated image for illustrative purposes only. Consumption and emission values are for guidance only and correspond to a standard home with a specific location, orientation and finishing materials.



Resort Map

PGA Catalunya

Carretera N-II km701,
17455 Caldes de Malavella,
Girona, Spain

Tel: +34 972 472 957
realestate@pgacatalunya.com
www.pgacatalunya.com