



LA PINEDA 25



PGA CATALUNYA
RESORT

LA PINEDA 25

A MOST BEAUTIFUL SHOW CASE OF MODERN ARCHITECTURE

ELEGANT DESIGN MEETS WELL THOUGHT PRACTICAL USE

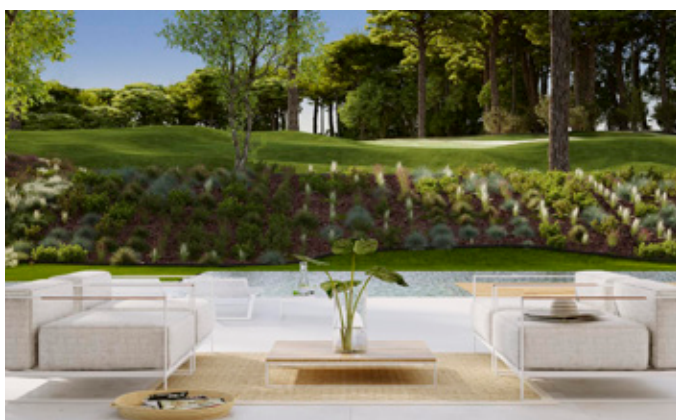
Designed by prize-winning Spanish architect Ramón Esteve, this elegant four-bedroom villa is located in a quiet corner in the western area of PGA Catalunya Resort. Its stunning modern architecture merges interior and exterior spaces to perfection.

Built on three levels, it maximises the use of natural light throughout. Thoughtful positioning and the clever landscaping of its Mediterranean style garden ensures a peaceful, private atmosphere. The living room gives access to a large covered terrace and beautiful private pool. The villa offers lovely views on the 8th fairway of the Tour Course and from the uppermost level of the villa, you can enjoy breath-taking panoramic views and watch the sunset over the Montseny mountains.

The property already boasts three en-suite bedrooms as well as a spacious master bedroom with its large bathroom and a private balcony. There is also the potential to create a fifth en-suite bedroom and add a lift as the pre-installation is done. The basement, which is also flooded with natural light thanks to interior patios, can be configured differently depending on your needs. All versions include a double garage and a multipurpose room in the basement.







BASIC DETAILS

ARCHITECT	Ramon Esteve
PLOT	1.039,2 m ²
BUILT AREA	516,4 m ²
PORCHES AND TERRACES	109,8 m ²
BEDROOMS	4
BATHROOMS	4
GUEST TOILET	1
PRIVATE PARKING	39,6 m ²
SWIMMING POOL	30,2 m ²
MULTIFUNCTIONAL ROOM	24 m ²
OPEN-PLAN BASEMENT	91,1 m ²

EQUIPMENT

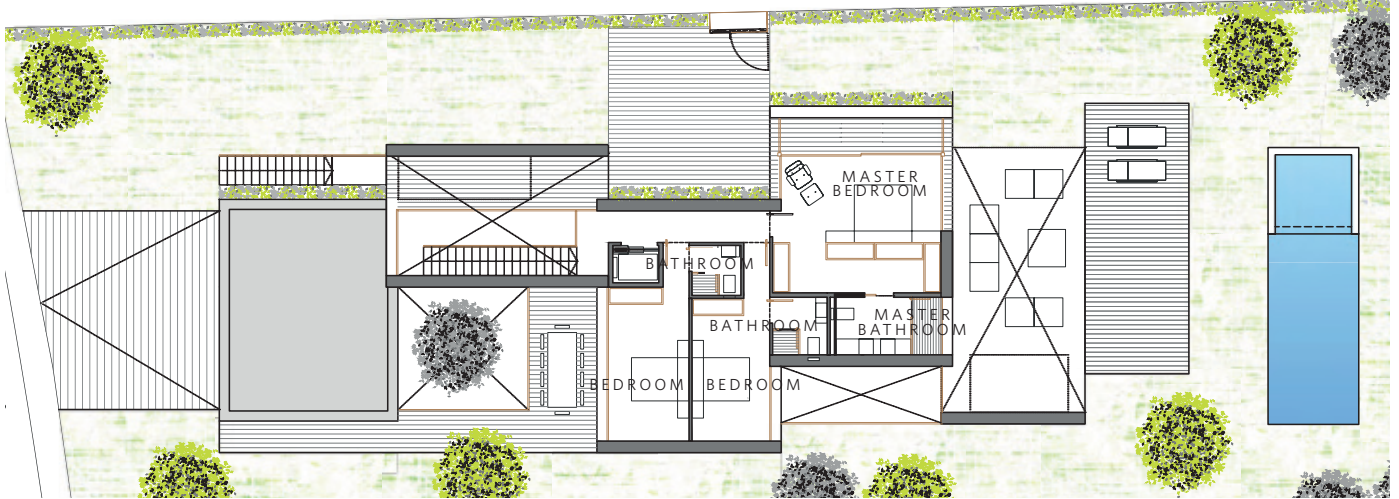
KITCHEN	Bulthaup, Neff
BATHROOMS	Bottega Porcelanosa
AIR CONDITIONING	Mitsubishi
HEATING	Heating floor
DOMOTICS	Control 4
COMMUNICATIONS	Optical Fibre, Wi-Fi Access Points
ENERGY QUALIFICATION	Rating A

This is a document provided for information purposes only, the Developer reserves the right to modify the figures and features & specifications because of technical or legal circumstances. The developer reserves the right to change the finishes for others of equal or higher quality than those specified. Computer generated image for illustrative purposes only. Consumption and emission values are for guidance only and correspond to a standard home with a specific location, orientation and finishing materials.

Built area	516,4 m ²
Porches and terraces	109,8 m ²



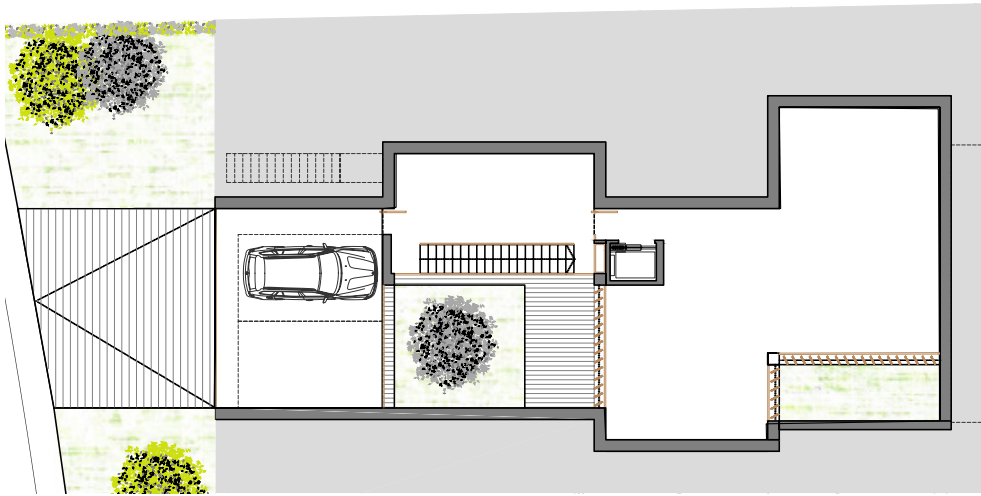
FIRST FLOOR



GROUND FLOOR



BASEMENT



YOUR NEW HOME AT PGA CATALUNYA RESORT



CONTACT

PGA Catalunya Resort
Carretera N-II km701, 17455 Caldes de Malavella,
Girona, Spain

Tel: +34 972 472 957
realestate@pgacatalunya.com
www.pgacatalunya.com