



LA PINEDA 18



PGA CATALUNYA
RESORT

LA PINEDA 18

CHARMING DESIGN VILLA FLOODED WITH NATURAL SUNLIGHT

Located on the northwest corner of the PGA Catalunya Resort next to hole 8 on the Tour Course, this beautifully appointed, L-shaped villa has been designed to maximise daylight hours, and located in a prime position on the edge of Mediterranean umbrella pine forest.

Designed by Catalan architect Jordi Llinares Martín, who specialises in low energy architecture, Pineda 18 makes a statement from the first impression where white plaster cladding combines with traditional 'Floresta' dry-stone walling technique typical to the area. Inside, Scandinavian inspired, open-plan living, lets air flow naturally through the space to create a bright, breezy atmosphere that is relaxed and easy to live in.

Low emissivity double-glazing, motorised Venetian blinds and sliding doors, create a space that seamlessly adapts to the Mediterranean climate making the most of hot, sunny days, Costa Brava breezes, and crisp winter evenings.

Hard wood floors run throughout the kitchen, living areas and bedrooms contrasted by ceramic tiles in the bathrooms and utility rooms. Bulthaup kitchen is complimented by top-flight appliances by Gaggenau. You'll find air conditioning and under-floor heating on both levels of the house and benefit from domotic home automation systems with internet based control access and security systems linked to the resort.

From the wrap around terrace, an infinity pool of approximately 30m² is surrounded by gardens and pines, giving a deep sense of privacy. There's also a rainwater collection tank, programmed to bypass an inbuilt irrigation system to keep your grounds looking green and serene year round.







BASIC DETAILS

ARCHITECT	Jordi Llinares Martín
PLOT	1050 m ²
INTERIOR BUILT AREA	450 m ²
EXTERIOR BUILT AREA	120 m ²
BEDROOMS	4
BATHROOMS	3
GUEST TOILET	1
POOL	27 m ²
PRIVATE PARKING	

EQUIPMENT

KITCHEN	Bulthaup, Gaggenau, Neff
BATHROOMS	Roca, Gala, Hidrobox, Hansgrohe
AIR CONDITIONING	Mitsubishi
HEATING	Radiant floor
DOMOTICS	Electron, Jung, Comfort click
COMMUNICATIONS	Optical Fibre, Wi-Fi Amplifier
ENERGY QUALIFICATION	Rating B

Estimated built areas, counting the 100% of the surface area of the property, 50% of the covered patios. Approximate terrace surface counting is 100%. This is a document provided for information purposes only, the Developer reserves the right to modify the figures and features & specifications because of technical or legal circumstances. The developer reserves the right to change the finishes for others of equal or higher quality than those specified. Computer generated image for illustrative purposes only. Consumption and emission values are for guidance only and correspond to a standard home with a specific location, orientation and finishing materials.

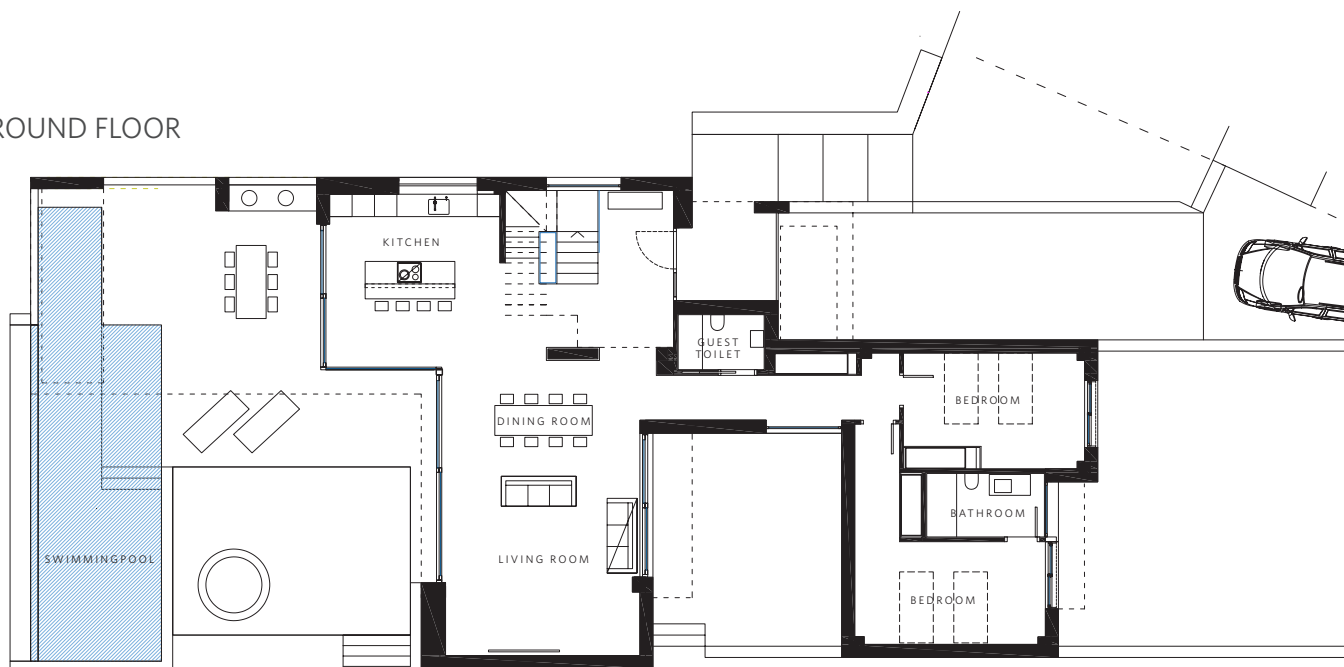
Interior built area	450 m ²
Exterior built area	120 m ²



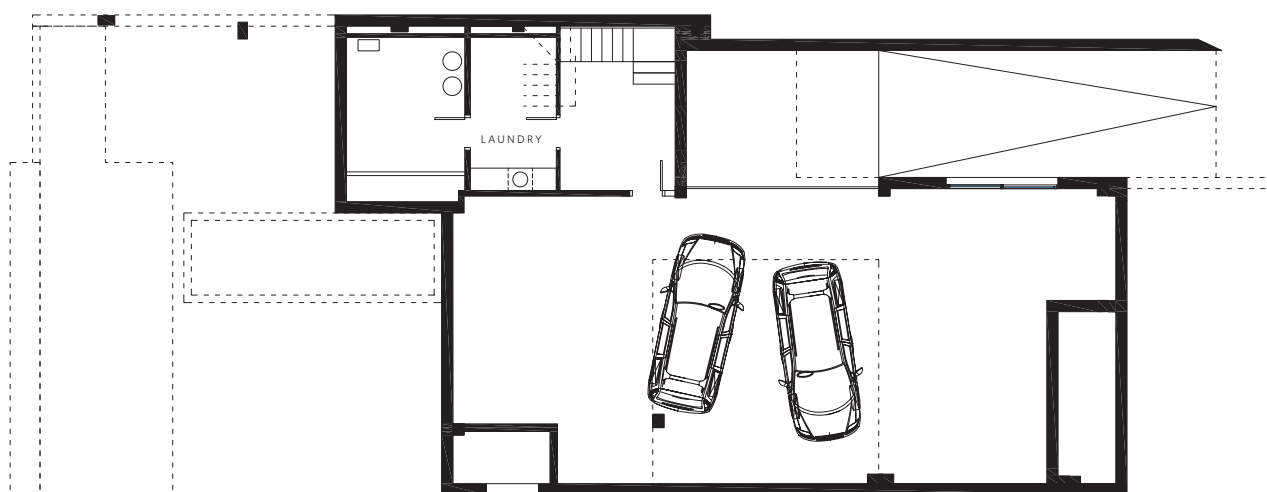
FIRST FLOOR



GROUND FLOOR



BASEMENT



YOUR NEW HOME AT PGA CATALUNYA RESORT



CONTACT

PGA Catalunya Resort
Carretera N-II km701, 17455 Caldes de Malavella,
Girona, Spain

Tel: +34 972 472 957
realestate@pgacatalunya.com
www.pgacatalunya.com