

LA PINEDA

11



PGA CATALUNYA
GOLF AND WELLNESS

Set in the 500 hectare Catalan countryside, the 290 unique properties at PGA Catalunya Golf and Wellness are designed to allow the beauty of their woodland surroundings to pour in.

Blending nature into the architecture of our sustainable properties, the design focuses on mental and physical wellbeing throughout. Not only will residents benefit from award-winning design and architecture, they can also step outside into our uninhibited Catalan landscape, with endless mountain views.

Residents will benefit from an abundance of experiences designed to rejuvenate the mind and body. From a round on PGA Catalunya's European Tour golf course, the Stadium Course, to walking through our kitchen garden to pick your own organic produce for the table.

Being among the Catalan pine trees is a truly holistic way to live. No aspect of our exceptional properties is left unturned, with carefully considered nutrition, comfort and exercise set to enhance everyday living.

Our IAGTO sustainability award-winning properties offer a glimpse of the future of environmentally conscious living with a nod to PGA Catalunya's philosophy to celebrate the finer things in life; eating well, being well and living well.

pgacatalunya.com



PGA CATALUNYA
GOLF AND WELLNESS

Modern Mediterranean-style Villa **Blurring the lines beside inside and outside spaces**

This elegant Mediterranean villa sits on an elevated plot that provides fantastic view of the fairway and green of The Tour Golf Course and its breathtaking natural surroundings. An aesthetically pleasing porch brings you into the airy living space which leads to the outdoor areas: a spacious patio, terrace, garden and private infinity pool.

Natural light is maximised throughout and the architecture blurs the lines between indoors and outdoors. The American style kitchen and expansive living area are perfect for entertaining. The great terrace, which provides shade, features a barbecue, dining area and solarium.

On the first floor, the Master bedroom incorporates a dressing room, a sizeable ensuite bathroom and access to a terrace. South facing with large windows, its views are a key feature. The other two ensuite bedrooms, are also south facing with fantastic views. The property has parking and a large basement which can be configured to please, it could be a gym, a games room or whatever you prefer.

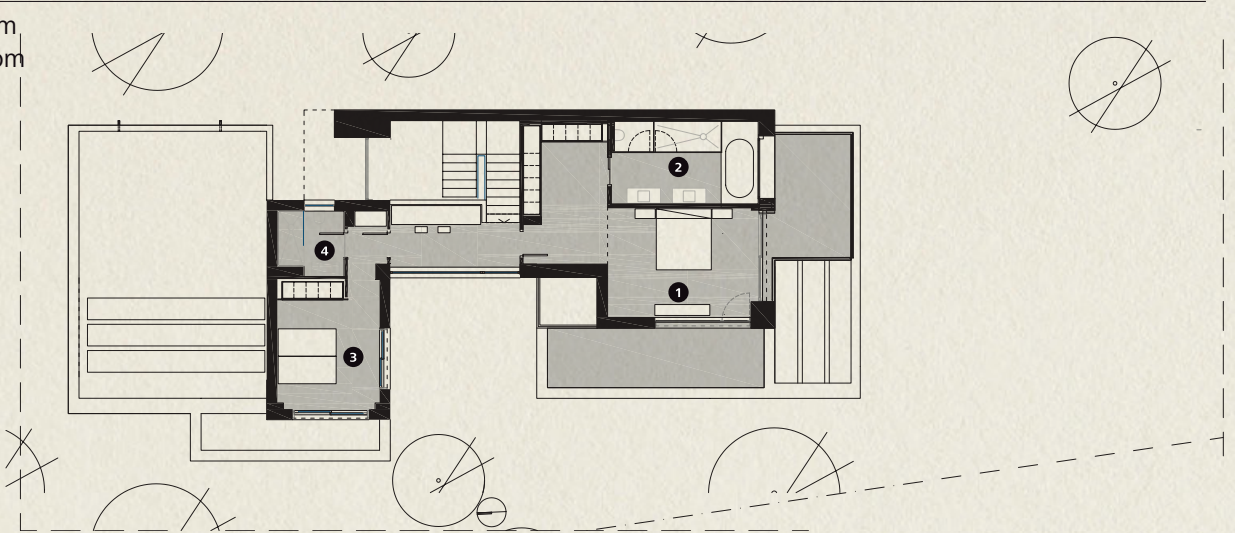
The villa has been carefully designed to ensure high energy efficiency so that its occupants are comfortable whether it's mid-winter in the Costa Brava or the height of the Mediterranean summer.





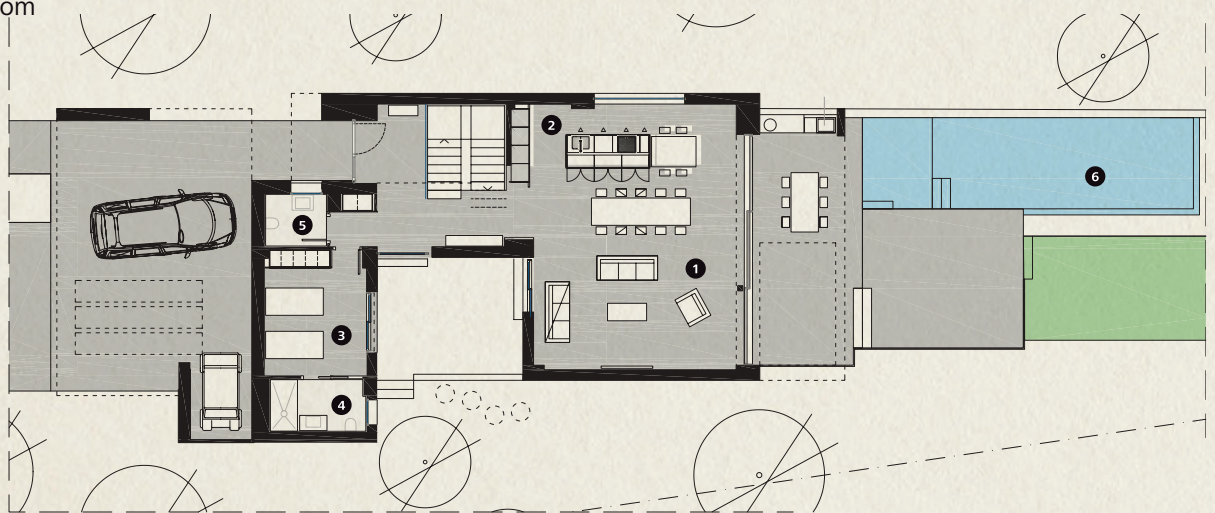
First Floor

- 1 Master Bedroom
- 2 Master Bathroom
- 3 Bedroom
- 4 Bathroom



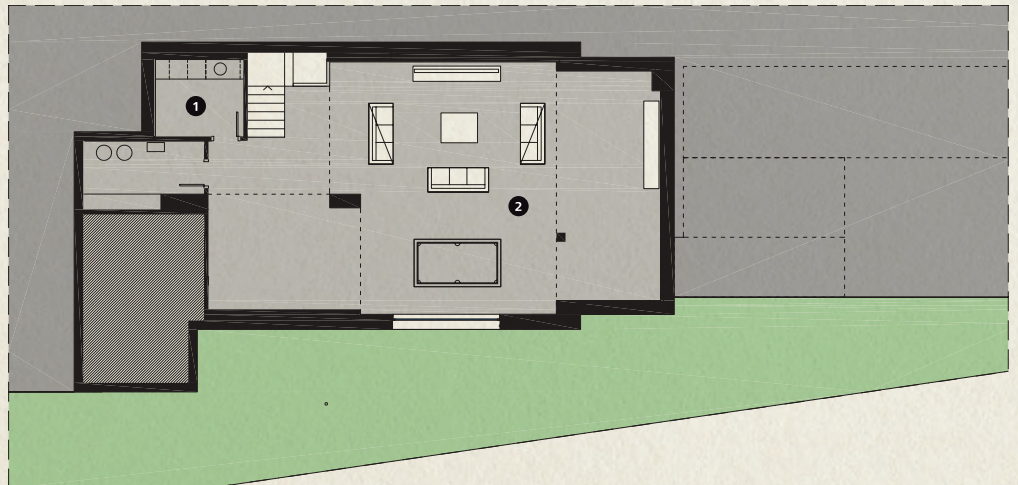
Ground Floor

- 1 Dining Living Room
- 2 Kitchen
- 3 Bedroom
- 4 Bathroom
- 5 Guest Toilet
- 6 Swimming



Basement

- 1 Laundry
- 2 Multifunctional room



Specifications

Architect	Jordi Llinares
Plot	954,6 m ²
Built area	400 m ²
Porches and Terraces	153,1 m ²
Bedrooms	3
Bathrooms	3
Guest toilet	1
Private Parking	48,6 m ²
Swimming Pool	32 m ²
Multifunctional Room	110 m ²
Kitchen	Bulthaup Gaggenau Neff
Bathrooms	Roca Gala brand Hansgrohe
Air Conditioning	Mitsubishi
Heating	Heating floor
Domotics	Control 4
Communications	Optical Fibre, Wi-Fi Access Points
Energy Qualification	Rating B



This is a document provided for information purposes only, the Developer reserves the right to modify the figures and features & specifications because of technical or legal circumstances. The developer reserves the right to change the finishes for others of equal or higher quality than those specified. Computer generated image for illustrative purposes only. Consumption and emission values are for guidance only and correspond to a standard home with a specific location, orientation and finishing materials.



Resort Map

PGA Catalunya
 Carretera N-II km701,
 17455 Caldes de Malavella,
 Girona, Spain

Tel: +34 972 472 957
realestate@pgacatalunya.com
www.pgacatalunya.com