



# LA GINESTA

2



PGA CATALUNYA  
GOLF AND WELLNESS

Set in a 500 hectare Catalan countryside, the unique properties at PGA Catalunya are designed to let the beauty of their woodland surroundings to pour inside.

Blending nature into the architecture of our sustainable properties, the design focuses on mental and physical wellbeing throughout. Not only will residents benefit from award-winning design and architecture, they will also step outside into our uninhibited Catalan landscape and enjoy its endless mountain views.

Residents will certainly appreciate the abundance of experiences crafted to rejuvenate the mind and the body: from a round on PGA Catalunya's European Tour golf courses, the Stadium and the Tour Course, to walking through our kitchen garden to pick your own organic produce for the table.

Being among the Catalan pine trees is a truly holistic way to experience life. No aspect of our exceptional properties is left unturned, with carefully considered nutrition, comfort and exercise set to enhance everyday living.

Our IAGTO sustainability award-winning resort offers a glimpse of the future of environmentally conscious living cultivating PGA Catalunya's philosophy to celebrate the finer things in life: eating well, being well and living well.

[pgacatalunya.com](http://pgacatalunya.com)



**PGA CATALUNYA**  
GOLF AND WELLNESS

## 2 LA GINESTA

### **Breathtaking golf course views With private infinity pool**

Set in the Eastern nook of PGA Catalunya, this elevated plot benefits from breathtaking views of the 15th hole of the Stadium Golf Course and beyond. Ginesta 2's exclusive location is one of the many captivating aspects of this property.

Set over two sprawling floors, with access through the upper level, this attention-grabbing piece of architecture is designed by the Catalan architect Gerard Oliver. With a focus on light and shadows, you'll be instantly drawn to the white concrete pergola which sits at the front of the property, creating stunning shadows across the frontage.

The ground floor, which hosts most of Ginesta 2's rooms, is centred around a discreet courtyard. As the entrance is on the second floor, you will be able to enjoy the living space of the home - on the ground floor - privately, with the views of the Catalan countryside as your only company.

Light pours into the main living space - the conjoined living room and kitchen - on the ground floor and is joined by the master bedroom and a multi-purpose room which could be used as a fourth bedroom.

On the second floor - and at the entrance level - there are two further bedrooms with adjoining en-suite bathrooms, one of which has access to a solarium terrace with views of the Stadium Course.

The 10ft infinity pool is the stand-out aspect of Ginesta 2; it's connected to the main terrace and offers you the opportunity to enjoy secluded time in the Catalan sunshine as well as providing the perfect location for entertaining.





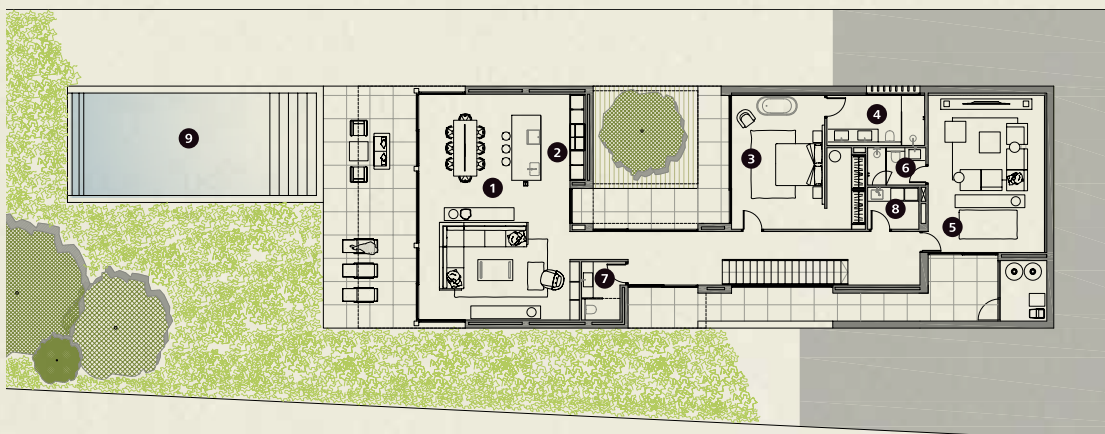
## First Floor

- 1 Bedroom
- 2 Bathroom
- 3 Bedroom
- 4 Bathroom



## Ground Floor

- 1 Dining Living Room
- 2 Kitchen
- 3 Master Bedroom
- 4 Master Bathroom
- 5 Multifunctional Room
- 6 Bathroom
- 7 Guest Toilet
- 8 Laundry
- 9 Swimming



# Specifications

Architect	Gerard Oliver
Plot	1025,1 m <sup>2</sup>
Built area	308,8 m <sup>2</sup>
Porches and Terraces	152 m <sup>2</sup>
Bedrooms	3
Bathrooms	4
Guest toilet	1
Private Parking	33,7 m <sup>2</sup>
Swimming Pool	44 m <sup>2</sup>
Multifunctional Room	33,5 m <sup>2</sup>
Kitchen	Modulnova Neff
Bathrooms	Duravit Fantini
Air Conditioning	Mitsubishi
Heating	Heating floor
Domotics	Control 4
Communications	Optical Fibre, Wi-Fi Access Points
Energy Qualification	Rating A



This is a document provided for information purposes only, the Developer reserves the right to modify the figures and features & specifications because of technical or legal circumstances. The developer reserves the right to change the finishes for others of equal or higher quality than those specified. Computer generated image for illustrative purposes only. Consumption and emission values are for guidance only and correspond to a standard home with a specific location, orientation and finishing materials.



## Resort Map

**PGA Catalunya**  
 Carretera N-II km701,  
 17455 Caldes de Malavella,  
 Girona, Spain

Tel: +34 972 472 957  
[realestate@pgacatalunya.com](mailto:realestate@pgacatalunya.com)  
[www.pgacatalunya.com](http://www.pgacatalunya.com)