



# WELL-VILLA

## LA GINESTA 7



PGA CATALUNYA  
GOLF AND WELLNESS

Set in a 500 hectare Catalan countryside, the unique properties at PGA Catalunya are designed to let the beauty of their woodland surroundings to pour inside.

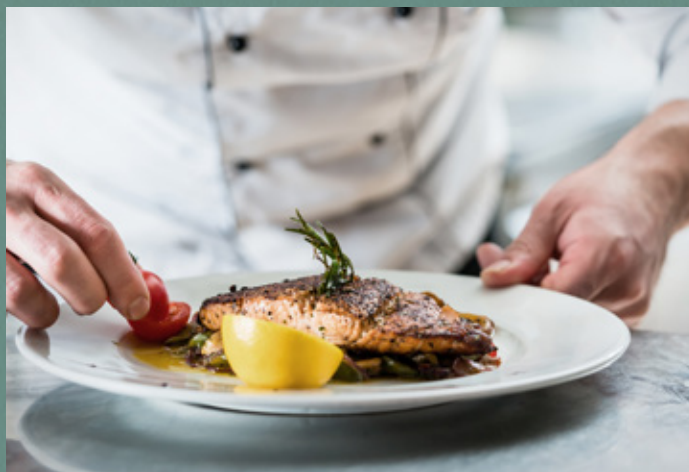
Blending nature into the architecture of our sustainable properties, the design focuses on mental and physical wellbeing throughout. Not only will residents benefit from award-winning design and architecture, they will also step outside into our uninhibited Catalan landscape and enjoy its endless mountain views.

Residents will certainly appreciate the abundance of experiences crafted to rejuvenate the mind and the body: from a round on PGA Catalunya's European Tour golf courses, the Stadium and the Tour Course, to walking through our kitchen garden to pick their own organic produce for the table.

Being among the Catalan pine trees is a truly holistic way to experience life. No aspect of our exceptional properties is left unturned, with carefully considered nutrition, comfort and exercise set to enhance everyday living.

Our IAGTO sustainability award-winning resort offers a glimpse of the future of environmentally conscious living cultivating PGA Catalunya's philosophy to celebrate the finer things in life: eating well, being well and living well.

[pgacatalunya.com](http://pgacatalunya.com)



**PGA CATALUNYA**  
GOLF AND WELLNESS

# WELL-VILLA

## **Investing in a new property can also be an investment in your wellbeing**

The Well-Villa is a property that takes PGA Catalunya Golf and Wellness commitment to promoting wellness to the next level. A genuinely ground-breaking project that delivers a home with wellness designed into everything from its foundations to its paint finishes.

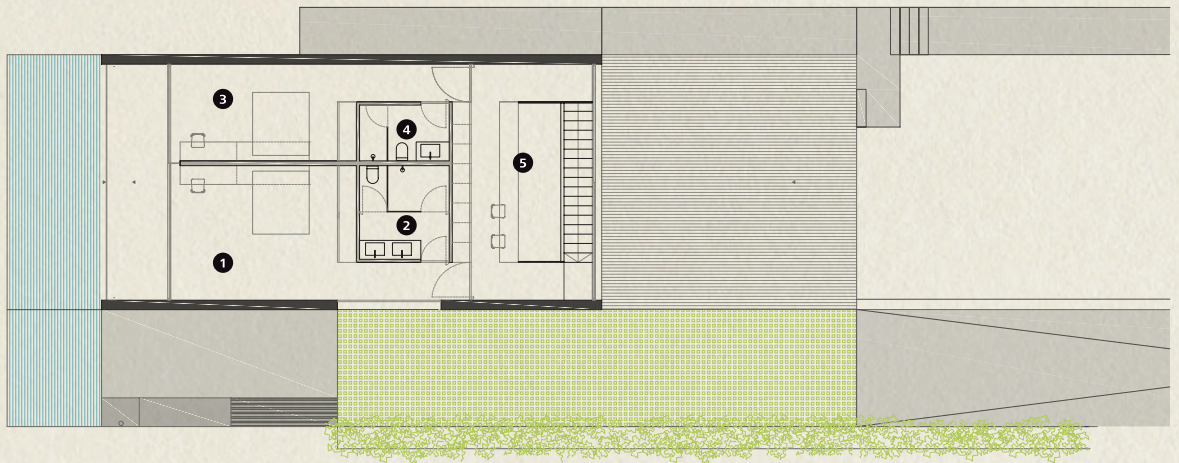
The inspiration was to use innovative design and technology to design a home that would enrich the physical and mental wellbeing of its occupants, connecting them to the beauty of the natural setting that surrounds it. At the leading edge of human centric design, The Villa is a biophilic space where every element has been carefully considered to enhance wellbeing holistically. Working with world-renowned architects Fran Silvestre and applying Espacious Evalore SLP's WELL system, PGA Catalunya has created a housing concept that promotes human wellbeing through seven specific areas (air, water, nourishment, light, fitness, comfort and mind). Every design choice in each area has been made to support wellbeing in this groundbreaking design.





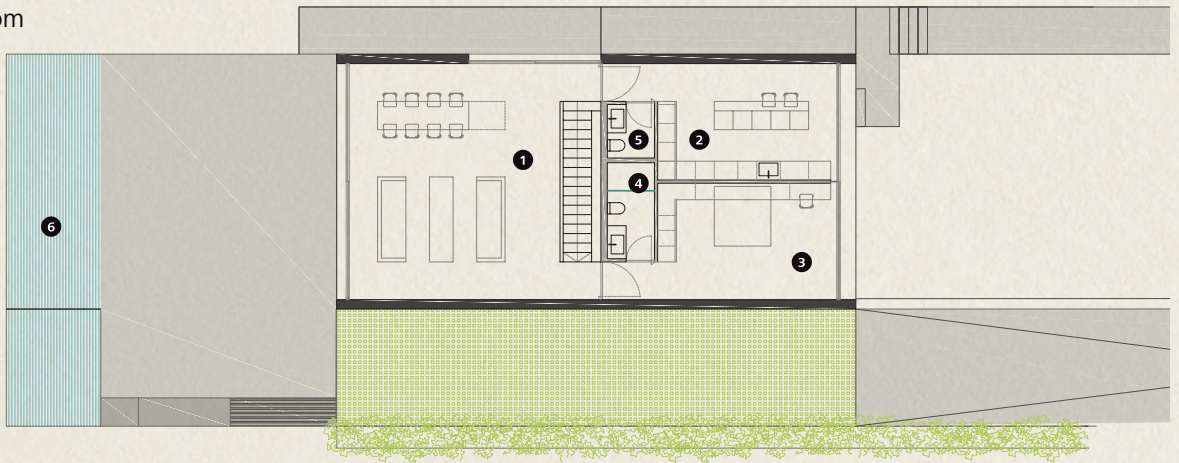
## First Floor

- 1 Master Bedroom
- 2 Master Bathroom
- 3 Bedroom
- 4 Bathroom
- 5 Studio



## Ground Floor

- 1 Dining Living Room
- 2 Kitchen
- 3 Bedroom
- 4 Bathroom
- 5 Guest Toilet
- 6 Swimming



## Basement

- 1 Bedroom
- 2 Guest Toilet
- 3 Laundry



# Specifications

Architect	Fran Silvestre
Plot	1.014,1 m <sup>2</sup>
Built area	367,3 m <sup>2</sup>
Porches and Terraces	158,9 m <sup>2</sup>
Bedrooms	4
Bathrooms	3
Guest toilet	2
Private Parking	
Swimming Pool	35,5 m <sup>2</sup>
Kitchen	Bulthaup Betacryl
Bathrooms	Sanindusa Urb. Tres Betacryl Mapiniranda
Air Conditioning	Mitsubishi
Heating	Heating floor
Domotics	Lutron
Communications	Optical Fibre, Wi-Fi Access Points
Energy Qualification	Rating A



This is a document provided for information purposes only, the Developer reserves the right to modify the figures and features & specifications because of technical or legal circumstances. The developer reserves the right to change the finishes for others of equal or higher quality than those specified. Computer generated image for illustrative purposes only. Consumption and emission values are for guidance only and correspond to a standard home with a specific location, orientation and finishing materials.

**Every design choice  
is focused on wellbeing**

The architects and designers who worked on this project looked at 7 key areas of a building that impact human wellbeing so that all their choices would boost the wellness of the inhabitants of the finished villa.



## Air

The air we breathe impacts our cardiovascular, endocrine, immune and nervous systems.

The Villa's state of the art ventilation prevents the entry of unwanted airborne particles including pollen and pollution and sanitizes air using ultraviolet germicidal irradiation and photocatalytic oxidation to deliver the best possible indoor air quality.



## Water

The home features a built-in reverse osmosis filter that uses three-stage filtration to ensure your drinking water is free from odours or flavours and has very low mineralization. A water softener at the property reduces the concentration of mineral compounds such as magnesium and calcium salts making cleaning easier and leaving you with softer hair and skin.



## Nourishment

Making nutritious meals from fresh unprocessed ingredients is essential for wellbeing. We have created a well-equipped kitchen at the heart of this home that will inspire you to cook and share meals, you might even use ingredients from our kitchen garden or honey from our hives. The kitchen features innovative antimicrobial countertops that prevent the development of bacteria eliminating it before it can form.



## Light

The Villa's large windows are optimised for light transmission and the open-plan layout maximises the use of natural light. The artificial lighting is also designed to support wellbeing, featuring high colour rendering index lighting, a circadian lighting alarm clock and movement activated low-intensity night lights.



## Fitness

The Well-Villa includes its own pool and exercise spaces. As residents, you will have easy access to all the activities the resort offers and full membership to The Resident's Club which offers its own fitness area, spa and pool as well as favourable rates for many additional activities.



## Comfort

The Well-Villa makes it easy for you to control all the environmental parameters of your home including temperature and humidity from a real-time display panel. It has been designed to maintain a comfortable constant temperature and minimise unwanted noise.



## Mind

The Well-Villa's architectural aesthetic blurs the lines between indoor and outdoor spaces, creating a series of relaxing spaces that promote a peaceful mind. It's been carefully positioned to avoid natural radiation, underground water currents and the meeting points of magnetic lines.



## Resort Map

**PGA Catalunya**  
 Carretera N-II km701,  
 17455 Caldes de Malavella,  
 Girona, Spain

Tel: +34 972 472 957  
[realestate@pgacatalunya.com](mailto:realestate@pgacatalunya.com)  
[www.pgacatalunya.com](http://www.pgacatalunya.com)