



TERRACE VILLAS

La Selva



PGA CATALUNYA
RESORT

TERRACE VILLAS La Selva

ELEGANCE AND STYLE AT THE HEART OF THE RESORT

The latest stylish properties in the Terrace Villas development are located near the 18th hole of the Stadium course, enjoying a prime location at the heart of PGA Catalunya Resort. Surrounded by Spain's leading golf course, the development has been divided into small modules to preserve the natural surroundings, maximising the convenient location while reducing the impact of the villas on the horizon. The 4-bedroom properties are just a 2-minute walk from the Clubhouse, Residents' Club and other key resort facilities.

The new units are evenly distributed across two floors adjacent to the pool area. The spacious properties feature a ground floor kitchen and living space that extends to a private courtyard with barbecue area. The four bedrooms on the upper level include a master suite and private terrace.

With their perfect east orientation, the wide façade invites an intense relationship with natural light and the landscape. The monumental entrance of each unit transforms even the car porch into an aesthetic element. Merging interior and exterior spaces to perfection, the Terrace Villas properties dissolve harmoniously into the landscape.

The ultra-modern villas are equipped with the latest smart home technology, benefiting from private parking, and access to a communal area - with infinity pool, changing rooms and a sun terrace - in addition to the Residents' Club with its outdoor swimming pool, gym and thermal circuit.







BASIC DETAILS

| | |
|----------------------|--|
| ARCHITECT | Lagula |
| BUILT AREA | From 168 m ² |
| PORCHES AND TERRACES | From 15 m ² |
| BEDROOMS | 4 |
| BATHROOMS | 2 |
| GUEST TOILET | 1 |
| PRIVATE PARKING | |
| STORAGE ROOM | |
| COMMUNAL AREA | Infinity pool (137 m ²), Children's pool (34 m ²), Sun terrace, Changing rooms |

EQUIPMENT

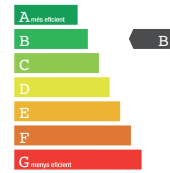
| | |
|----------------------|--------------------------------|
| KITCHEN | Bulthaup, Neff |
| BATHROOMS | Duravit, Catalano, Tres |
| AIR CONDITIONING | Mitsubishi or similar |
| HEATING | Radiant floor |
| DOMOTICS | Control 4 |
| COMMUNICATIONS | Optical Fibre, Wi-Fi Amplifier |
| ENERGY QUALIFICATION | Rating B |

This is a document provided for information purposes only, the Developer reserves the right to modify the figures and features & specifications because of technical or legal circumstances. The developer reserves the right to change the finishes for others of equal or higher quality than those specified. Computer generated image for illustrative purposes only. Consumption and emission values are for guidance only and correspond to a standard home with a specific location, orientation and finishing materials.

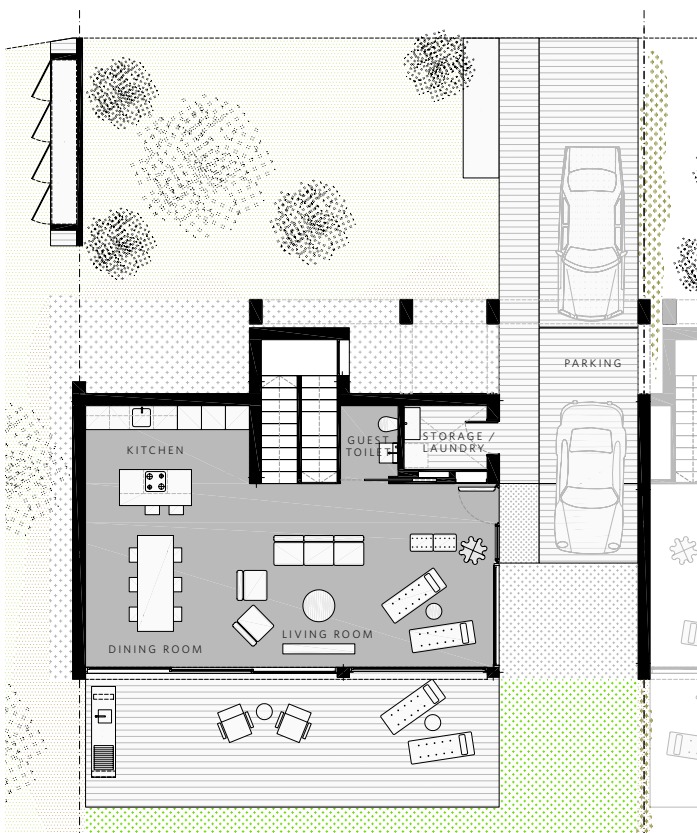


Built area from 168 m²

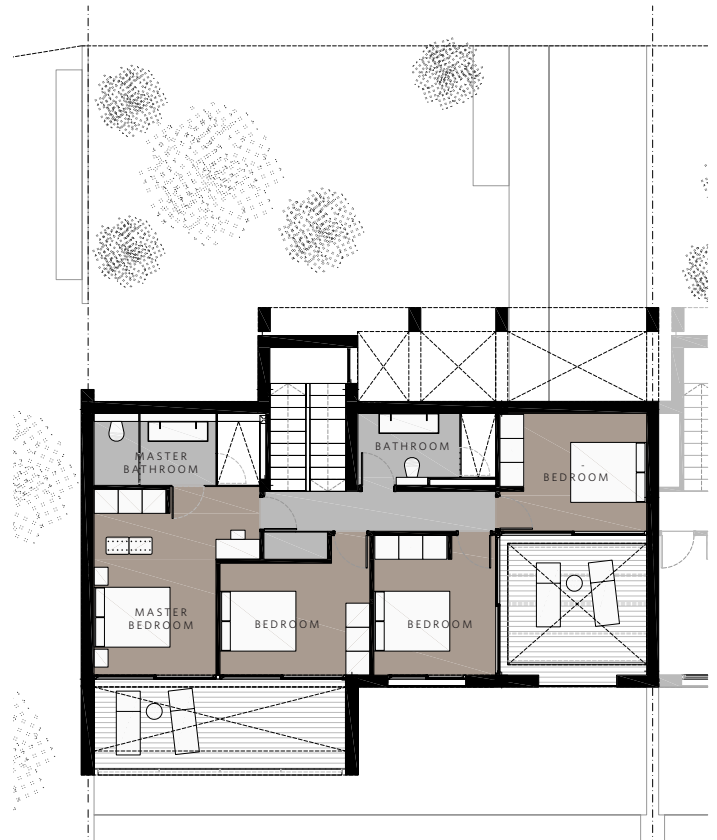
Porches and terraces from 15 m²



LOWER FLOOR



UPPER FLOOR



YOUR NEW HOME AT THE HEART OF
PGA CATALUNYA RESORT



CONTACT

PGA Catalunya Resort
Carretera N-II km701, 17455 Caldes de Malavella,
Girona, Spain

Tel: +34 972 472 957
realestate@pgacatalunya.com
www.pgacatalunya.com