



# TERRACE VILLAS

La Selva



PGA CATALUNYA  
RESORT



# TERRACE VILLAS La Selva

## MODERNITY AND TRADITION

---

### IN A MEDITERRANEAN-INSPIRED SPACE

At the heart of PGA Catalunya Resort a new form of living takes shape with the new La Selva Terrace Villas. Overlooking the 18th hole of the Stadium Course, the new 3-bedroom properties benefit from a privileged location combining unique privacy, amazing views and walking distance to the Clubhouse, Resident's Club and other key resort facilities.

Enclosed by the stunning No. 1 Golf Course in Spain, the development has been divided into small modules to preserve the natural surroundings providing each module with the perfect golf views, while reducing the impact on the horizon. Each of the units is distributed across 2 floors and terraces benefiting from Golf views and private gardens. The spacious properties are divided between social areas and 3 bedrooms, with the last units available designed to make the most of the panoramic views over the fairway, and the ideal solar orientation and exposure.

Merging interior and exterior spaces to perfection, the architecture harmoniously dissolves the volumes into the forest, providing privacy, shade or visual borders to these unique homes.

The new Terrace Villas will benefit from a private parking area, a storage room and a community infinity pool.











## BASIC DETAILS

ARCHITECT	Lagula
INTERIOR BUILT AREA	From 151,8 m <sup>2</sup>
COVERED TERRACE	From 20,6 m <sup>2</sup>
EXTERIOR BUILT AREA	From 127,9 m <sup>2</sup>
PRIVATE GARDEN	From 31 m <sup>2</sup>
BEDROOMS	3
BATHROOMS	2
GUEST TOILET	1
PRIVATE PARKING	
STORAGE ROOM	
COMMUNAL AREA	Infinity pool (137 m <sup>2</sup> ), Children's pool (34 m <sup>2</sup> ), Sun terrace, Changing rooms

## EQUIPMENT

KITCHEN	Bulthaup, Neff
BATHROOMS	Duravit, Tres
AIR CONDITIONING	Panasonic
HEATING	Radiant floor
DOMOTICS	KNX-Control 4
COMMUNICATIONS	Optical Fibre, Wi-Fi Amplifier
ENERGY QUALIFICATION	Rating B

Estimated built areas, counting the 100% of the surface area of the property, 50% of the covered patios. Approximate terrace surface counting is 100%. This is a document provided for information purposes only, the Developer reserves the right to modify the figures and features & specifications because of technical or legal circumstances. The developer reserves the right to change the finishes for others of equal or higher quality than those specified. Computer generated image for illustrative purposes only. Consumption and emission values are for guidance only and correspond to a standard home with a specific location, orientation and finishing materials. The measurements referred to in this brochure are those of the properties in Block B, they are an approximate guideline for the rest of the Blocks.



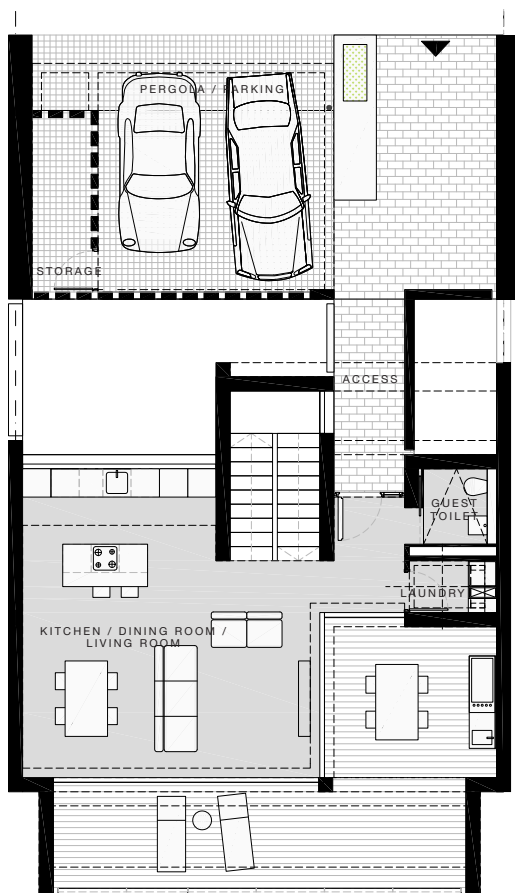
Interior built area                      from 151,8 m<sup>2</sup>

---

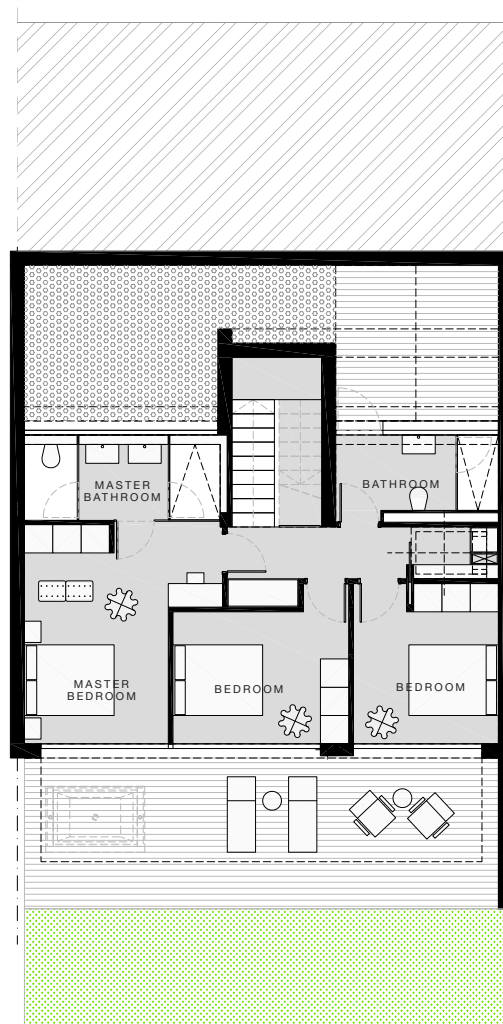
Exterior built area                        from 127,9 m<sup>2</sup>



### UPPER FLOOR

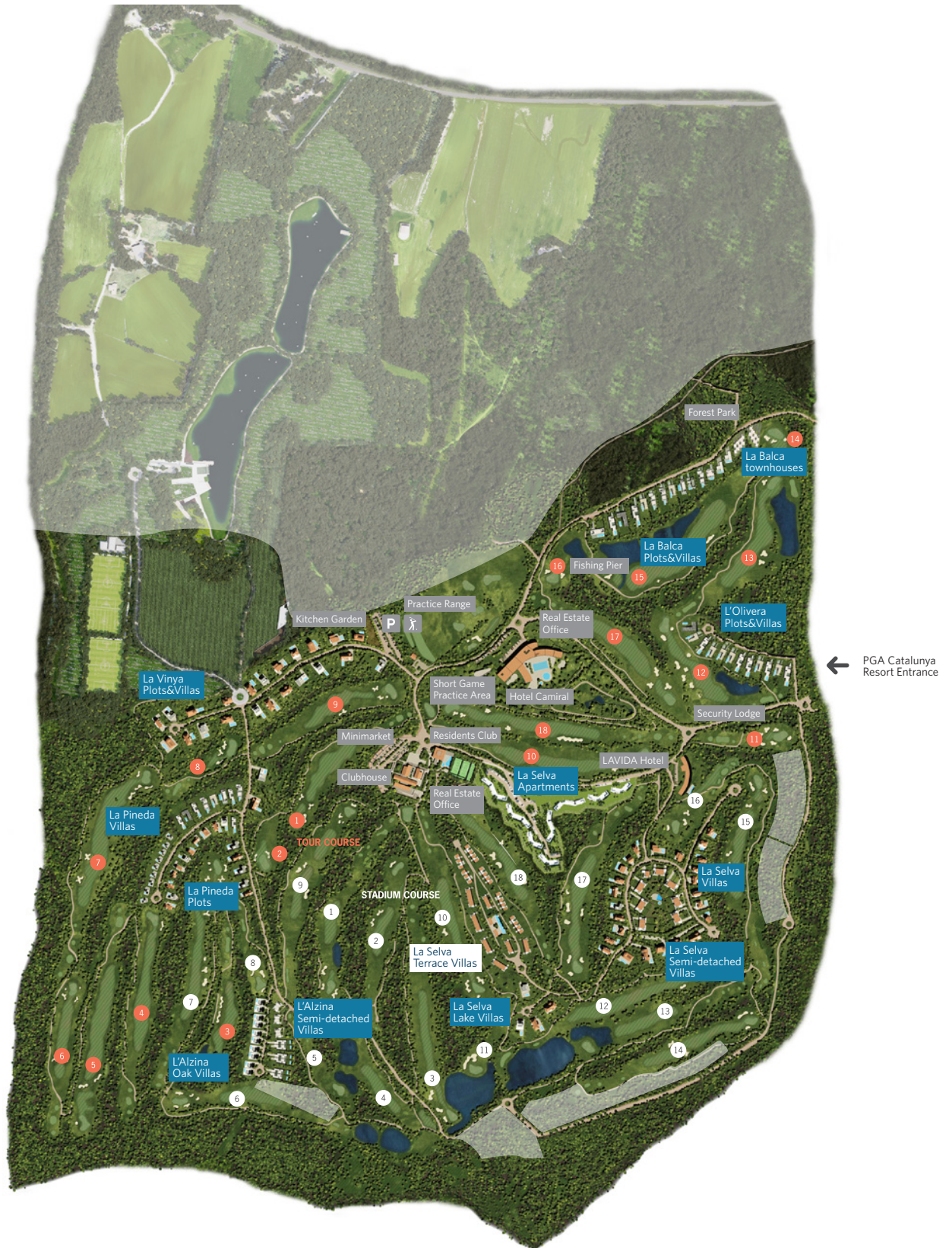


### LOWER FLOOR





YOUR NEW HOME AT THE HEART OF  
PGA CATALUNYA RESORT



CONTACT

PGA Catalunya Resort  
Carretera N-II km701, 17455 Caldes de Malavella,  
Girona, Spain

Tel: +34 972 472 957  
realestate@pgacatalunya.com  
www.pgacatalunya.com