



L'ALZINA

SEMI-DETACHED 14-23



PGA CATALUNYA
GOLF AND WELLNESS

Set in the 500 hectares of Catalan countryside, the unique properties at PGA Catalunya Golf and Wellness are designed to allow the beauty of their woodland surroundings to pour in.

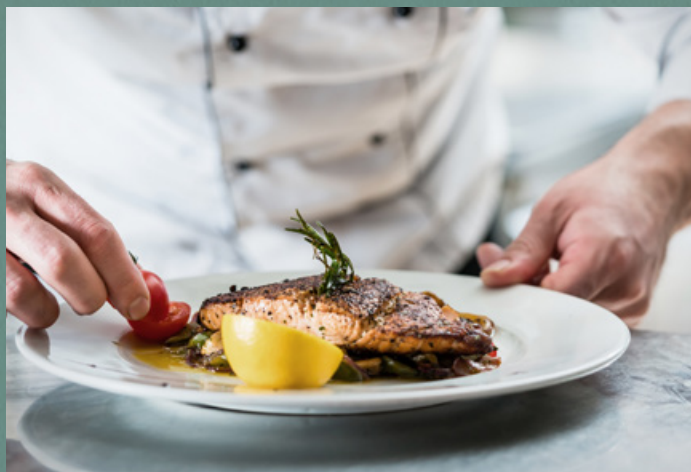
Blending nature into the architecture of our sustainable properties, the design focuses on mental and physical wellbeing throughout. Not only will residents benefit from award-winning design and architecture, they can also step outside into our uninhibited Catalan landscape, with endless mountain views.

Residents will benefit from an abundance of experiences designed to rejuvenate the mind and body. From a round on PGA Catalunya's European Tour golf course, the Stadium Course, to walking through our kitchen garden to pick your own organic produce for the table.

Being among the Catalan pine trees is a truly holistic way to live. No aspect of our exceptional properties is left unturned, with carefully considered nutrition, comfort and exercise set to enhance everyday living.

Our IAGTO sustainability award-winning resort offer a glimpse of the future of environmentally conscious living with a nod to PGA Catalunya's philosophy to celebrate the finer things in life; eating well, being well and living well.

pgacatalunya.com



PGA CATALUNYA
GOLF AND WELLNESS

L'ALZINA SEMI-DETACHED

Contemporary mediterranean-style villas Designed for family living

Located in the south-west of PGA Catalunya, this stylish, semi-detached family home was designed by the studio of award-winning Barcelona architect Jaime Prous. A fusion of traditional villa style and contemporary design, the property offers unique views of the world-class Stadium Course and Vallcanera forest.

The elegantly angular architecture brings the outside in, integrating the property effortlessly into the surrounding nature. The 3-bedroom villa makes the most of the Mediterranean light thanks to open plan interiors and floor-to-ceiling windows. An interior patio filled with aromatic plants helps define the space and enhance the luminosity. Perfect for family living and entertaining, the L-shaped communal living areas feature smooth tiled floors, in contrast with the oak wood flooring in the bedrooms.

The carefully landscaped exterior spaces feature a subtle interplay of pergolas, vegetation and a sun-filled terrace, ideal for making the most of the climate - and for al fresco dining. A barbecue area leads onto an inviting plunge pool. The pure, clean lines and white volumes of the property blend smoothly with traditional materials such as marble and ceramic, to create a harmonious home filled with light and colour.

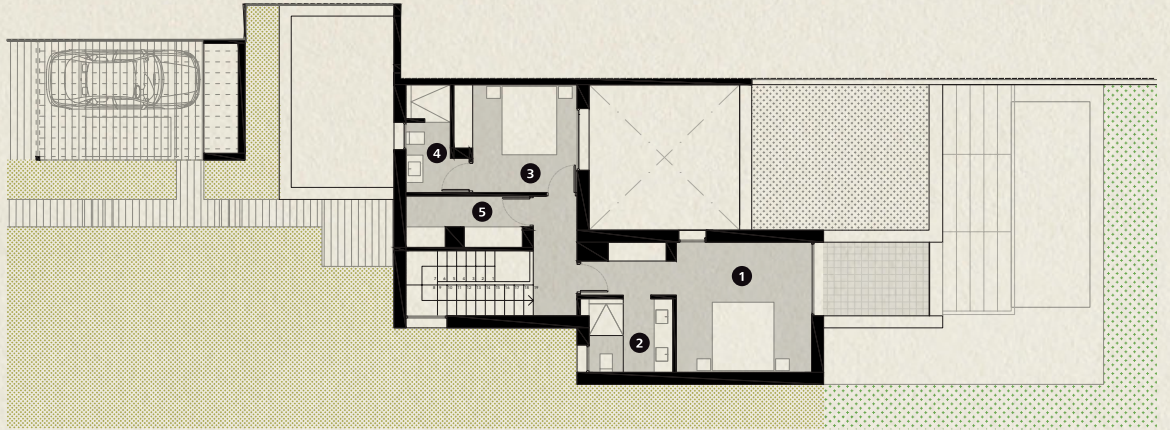
A tribute to nature, Mediterranean lifestyle - and modernity.





First Floor

- 1 Master Bedroom
- 2 Master Bathroom
- 3 Bedroom
- 4 Bathroom
- 5 Laundry



Ground Floor

- 1 Dining Living Room
- 2 Kitchen
- 3 Bedroom
- 4 Bathroom
- 5 Guest Toilet
- 6 Swimming



Specifications

Architect	Jaime Prous
Plot	From 350,9 m ² to 577,7 m ²
Built area	From 290,7 m ² to 320,8 m ²
Porches and Terraces	From 64,3 m ² to 71,6 m ²
Bedrooms	3 (en suite)
Bathrooms	5
Guest toilet	1
Private Parking	From 30,2 m ² to 61,4 m ²
Swimming Pool	From 9,2 m ² to 13,8 m ²
Storage Room	4,2 m ²
Kitchen	Bulthaup Neff Gaggenau Novy
Bathrooms	Roca Duravit Tres
Air Conditioning	Mitsubishi
Heating	Heating floor
Domotics	Control 4
Communications	Optical Fibre, Wi-Fi Access Points
Energy Qualification	Rating B



This is a document provided for information purposes only, the Developer reserves the right to modify the figures and features & specifications because of technical or legal circumstances. The developer reserves the right to change the finishes for others of equal or higher quality than those specified. Computer generated image for illustrative purposes only. Consumption and emission values are for guidance only and correspond to a standard home with a specific location, orientation and finishing materials.



Resort Map

PGA Catalunya
 Carretera N-II km701,
 17455 Caldes de Malavella,
 Girona, Spain

Tel: +34 972 472 957
realestate@pgacatalunya.com
www.pgacatalunya.com