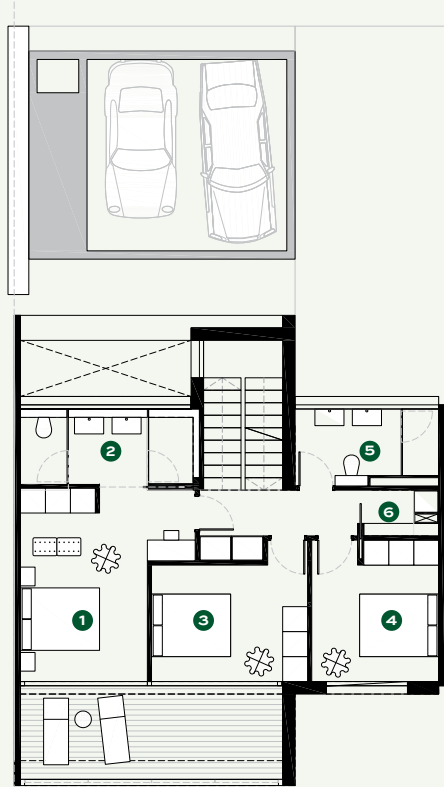


Overlooking the 10th hole of the Stadium Course, this 3-bedroom property benefits from a privileged location combining unique privacy, amazing views and walking distance to the Clubhouse and Residents Club. The unit distributed across 2 floors and terraces. The spacious living area with floor-to-ceiling windows opens directly to the private garden merging interior and exterior spaces to perfection. Three double bedrooms, one with en-suite bathroom, are located in the first floor. The property is South/South-West facing. It benefits from a private parking area, a storage room and a stunning community infinity pool.



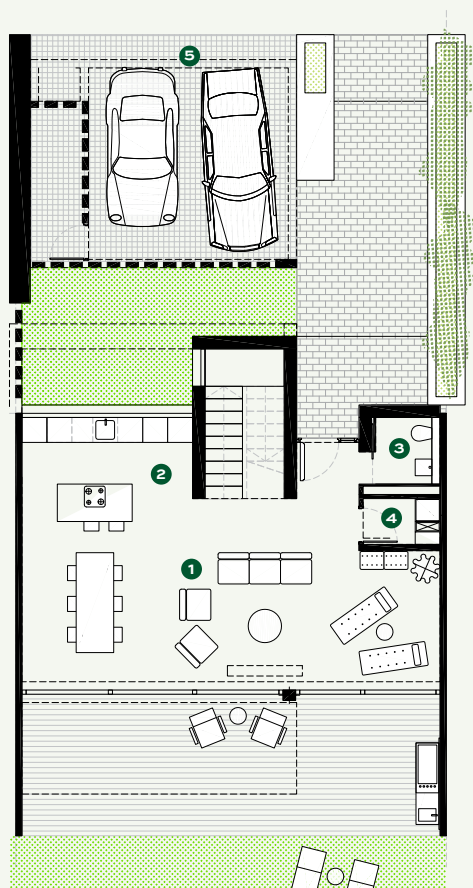
FIRST FLOOR

- 1 Master Bedroom
- 2 Master Bathroom
- 3 Bedroom
- 4 Bedroom
- 5 Bathroom
- 6 Storage Room



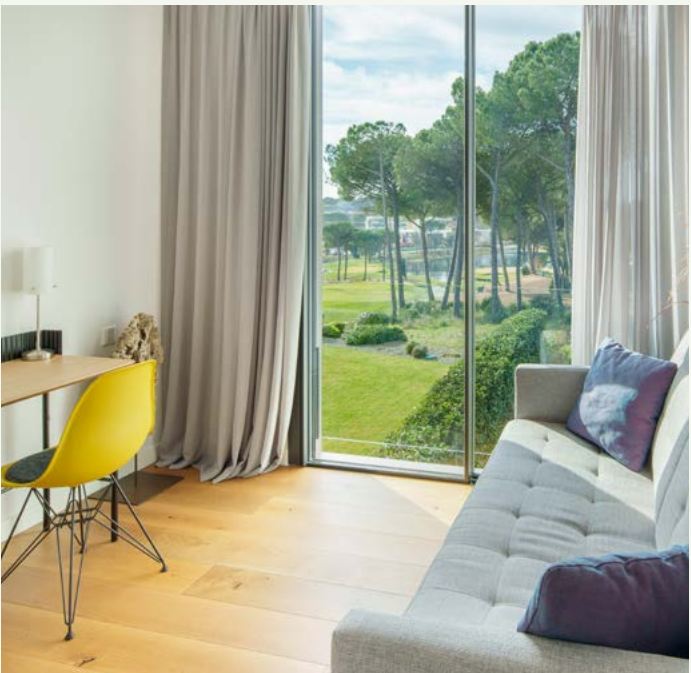
GROUND FLOOR

- 1 Dining Living Room
- 2 Kitchen
- 3 Guest Toilet
- 4 Laundry
- 5 Private Parking



SPECIFICATIONS

Architect	Lagula Arquitectes
Price	€1.250.000
Built Area	158 m²
Porches and Terraces	115 m²
Bedrooms	3
Bathrooms	2
Guest Toilet	1
Private Garden	106 m²
Exterior Terrace	
Community Pool	
Private Parking	
Heating	Heating Floor
Domotics	Control 4
Communications	Optical Fibre, Wi-Fi Access Points
Energy Qualification	Rating B



This is a document provided for information purposes only, the Developer reserves the right to modify the figures and features & specifications because of technical or legal circumstances. The developer reserves the right to change the finishes for others of equal or higher quality than those specified. Computer generated image for illustrative purposes only. Consumption and emission values are for guidance only and correspond to a standard home with a specific location, orientation and finishing materials.