

L'ALZINA SEMI-DETACHED 14

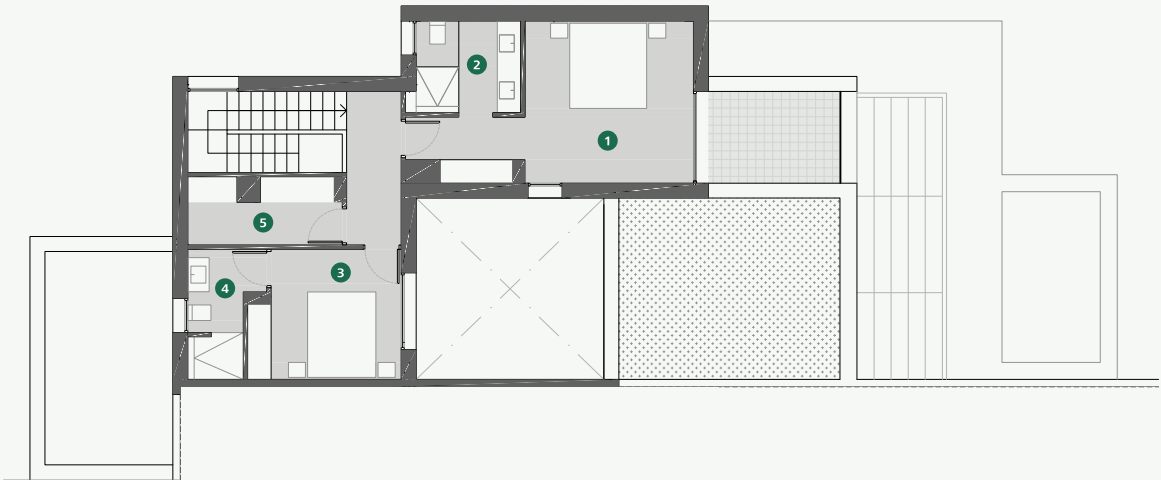
This modern semi-detached family house, located on a corner of the residential area of l'Alzina, blends the style of a traditional villa with contemporary design, offering magnificent views of the extraordinary Stadium Course and the Vallcanera forest. The architecture, with its elegant angular lines, eliminates the barriers between the inside and the outside, integrating nature. In this 3-bedroom house, it is possible to make the most of the Mediterranean sunlight thanks to the open-plan interiors and floor-to-ceiling windows. The L-shaped living areas are ideal for sharing life and leisure with the family. You can access the pool, which invites you to take a dip, from the barbeque area.





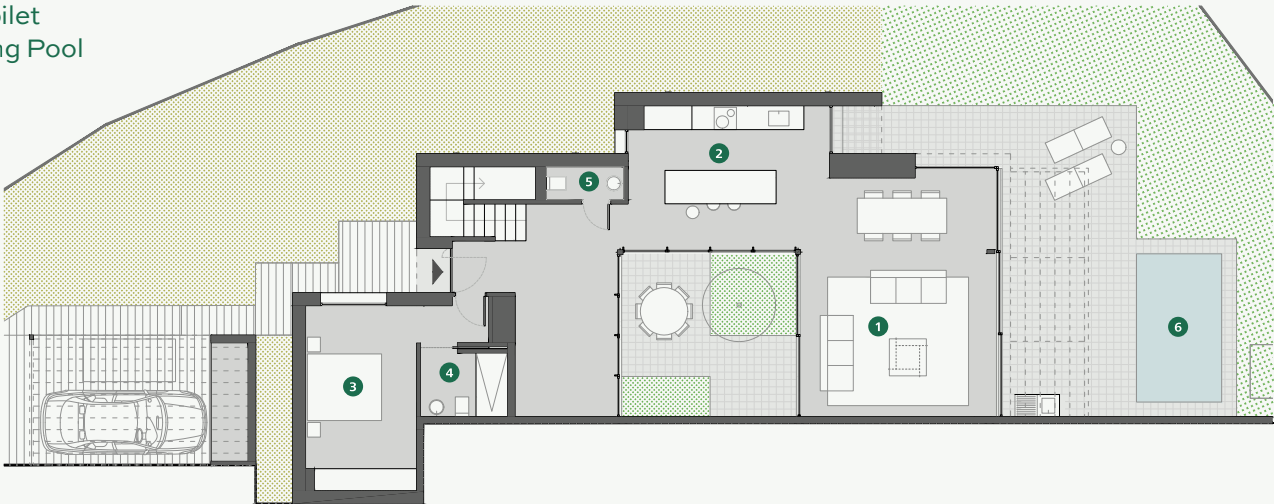
FISRT FLOOR

- 1 Master bedroom
- 2 Master bathroom
- 3 Bedroom
- 4 Bathroom
- 5 Laundry



GROUND FLOOR

- 1 Dining Living Room
- 2 Kitchen
- 3 Bedroom
- 4 Bathroom
- 5 Guest Toilet
- 6 Swimming Pool



SPECIFICATIONS

Architect	Jaime Prous Arquitects
Price	€1.595.000
Built Area	334,16 m²
Porches and Terraces	76,95 m²
Bedrooms	3
Bathrooms	3
Guest toilet	1
Swimming Pool	9,20 m²
Private Parking	
Additional solar panels	
Air Conditioning	
Heating	Underfloor heating
Domotics	Control 4
Communications	Optical Fibre, Wi-Fi Access Points
Energy Qualification	Rating B



CONTACT
Camiral, a Quinta do Lago Resort
Carretera N-II km 701,
17455 Caldes de Malavella, Girona, Spain
+34 972 472 957
realestate@camiral.com
www.camiral.com